

G16-17A: Triangles of the Neck



GL16:

A - Anterior Triangle (Cadaver)

B - Bone Lab (Skulls) HSEB 4300

G16-17A: Objectives

- Posterior triangle of the Neck
- Anterior triangle of the Neck
- Visceral triangle of the Neck
- Root of the Neck

Triangles of the Neck

Borders

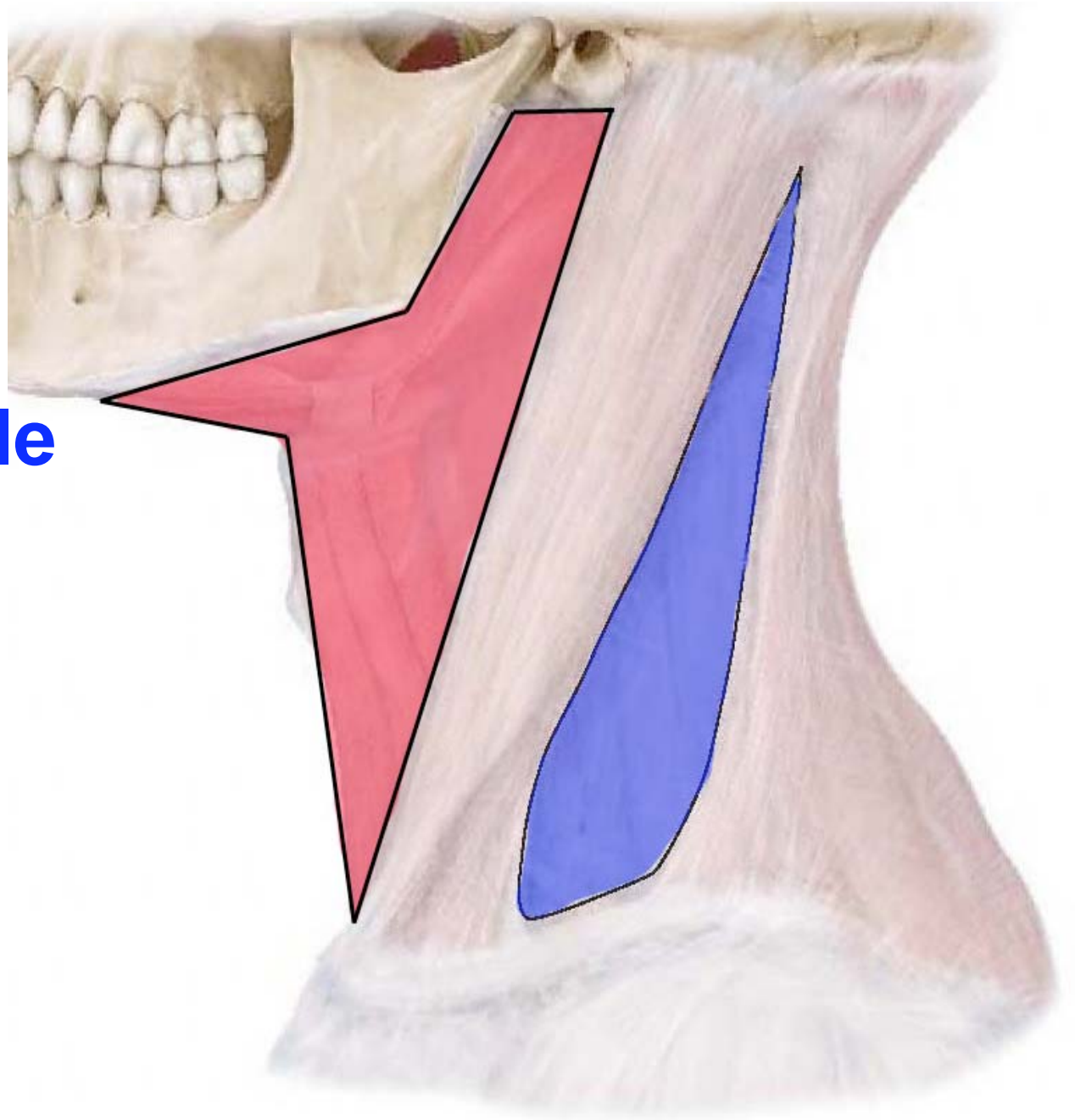
- SCM
- Trapezius



Triangles of the Neck

Anterior triangle

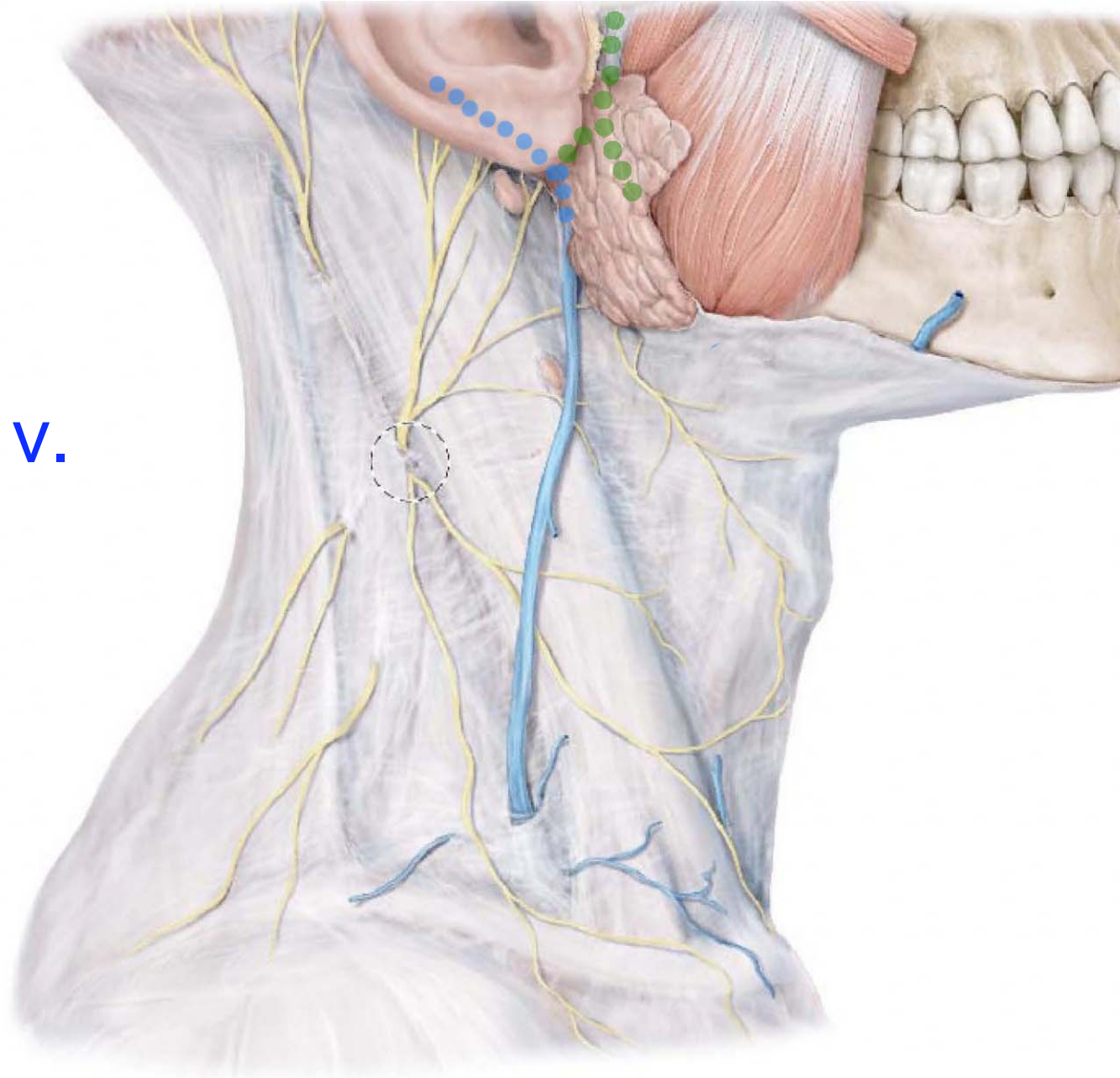
Posterior triangle



1. Posterior Triangle

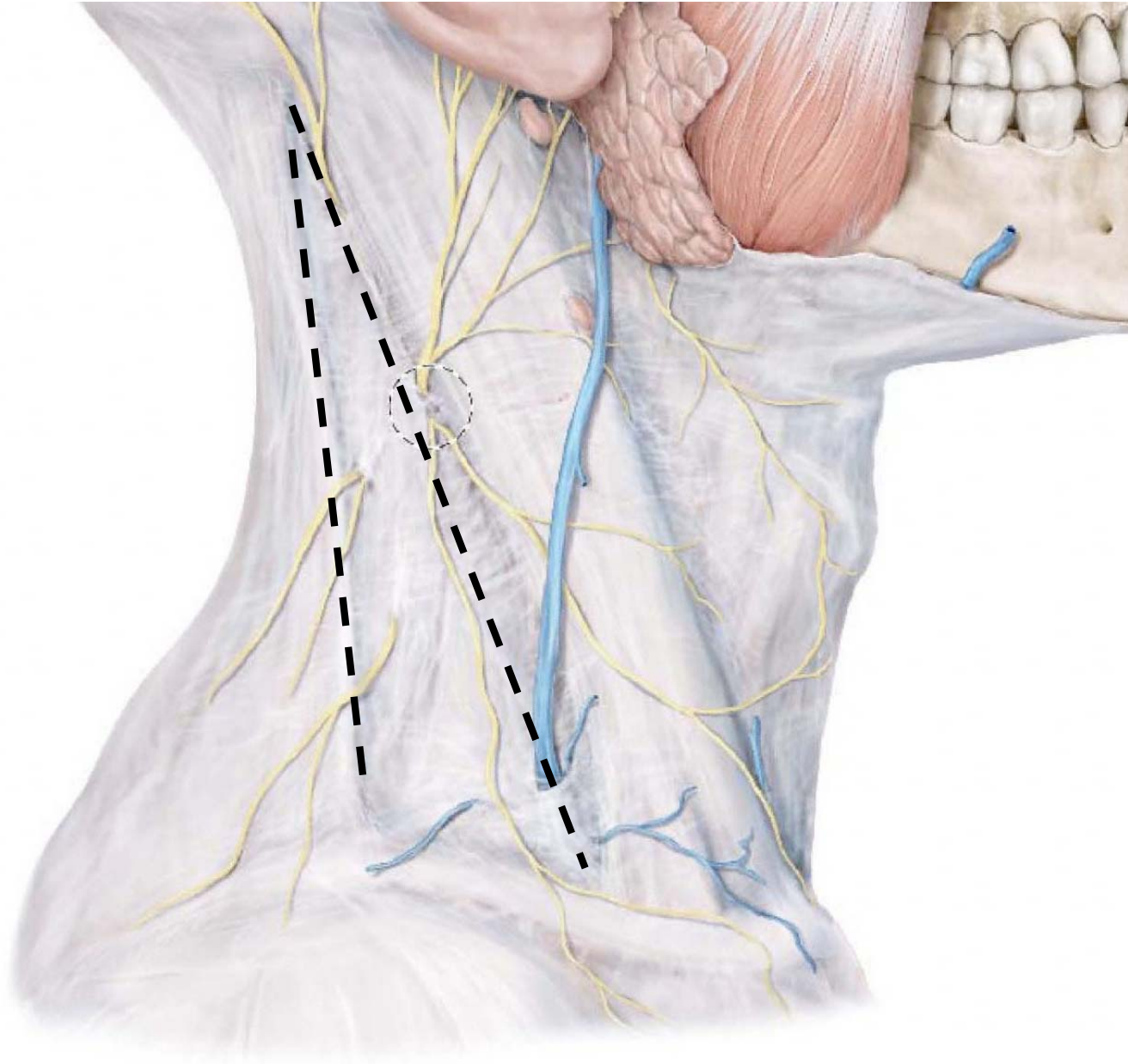
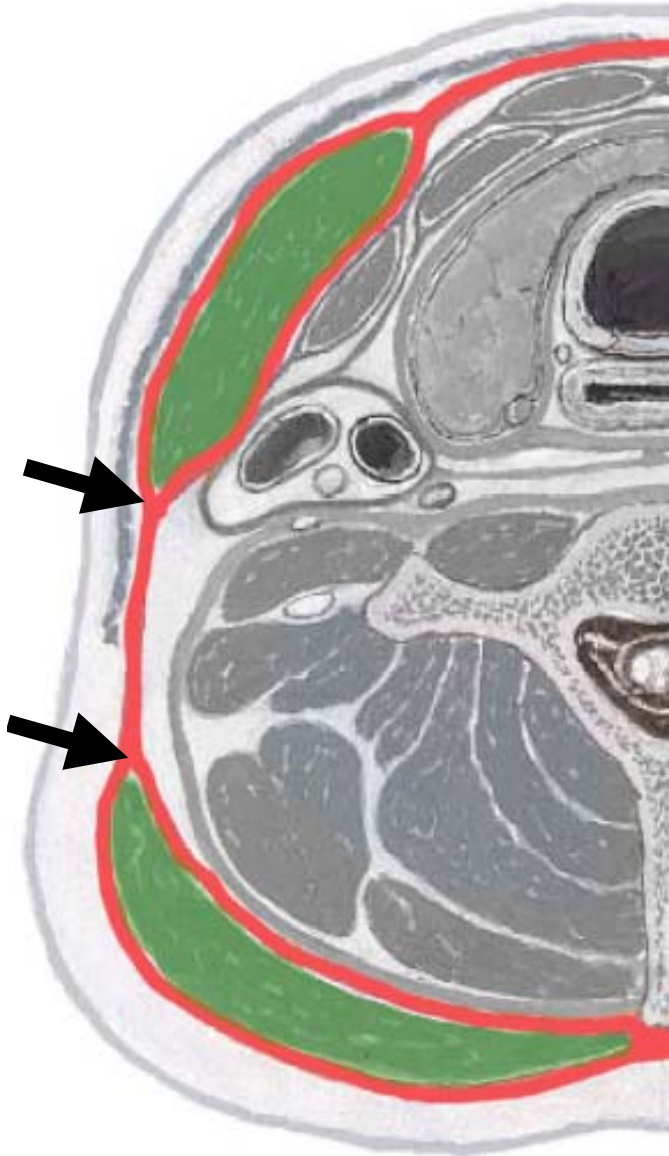
Cervical plexus

External jugular v.



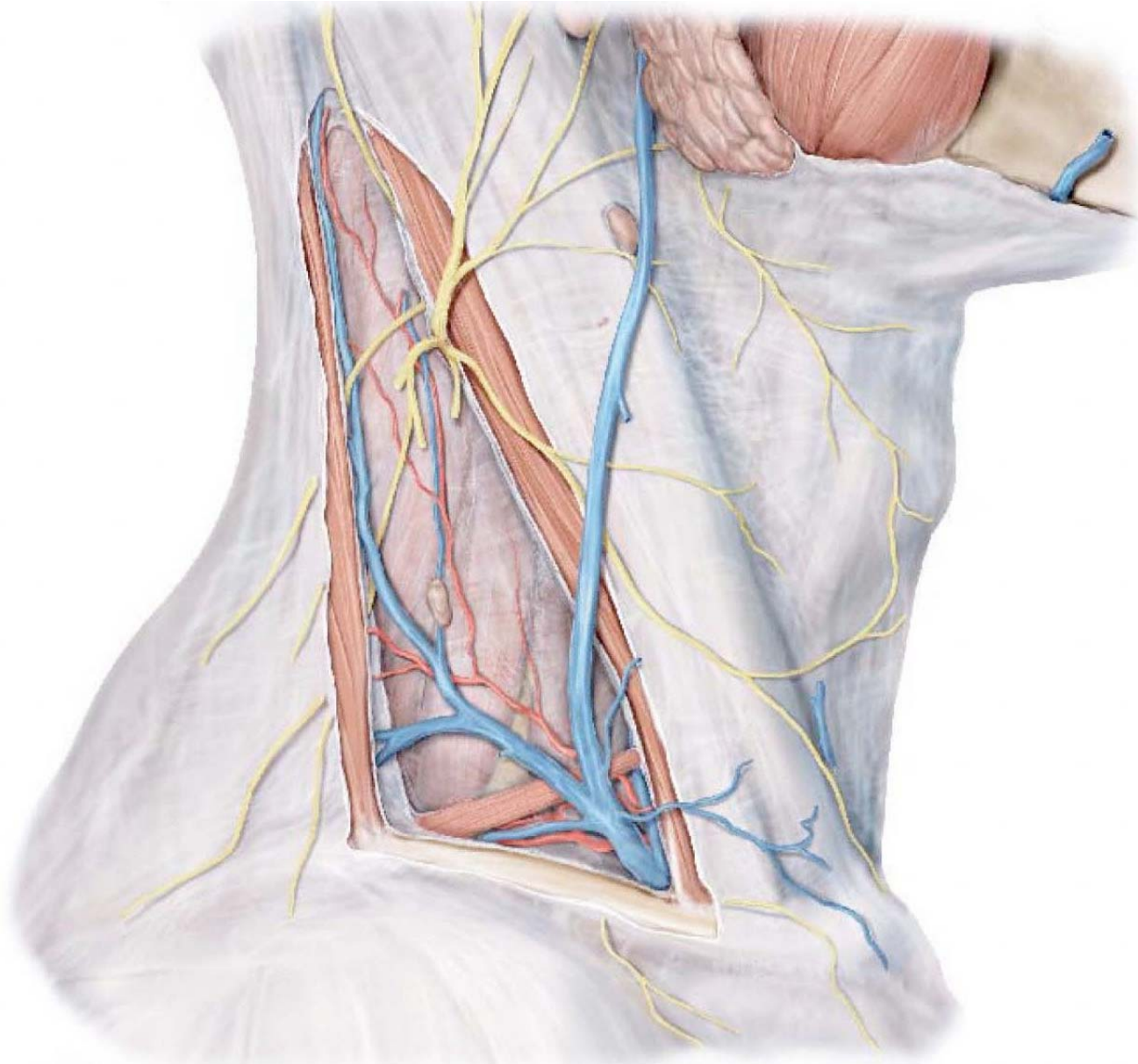
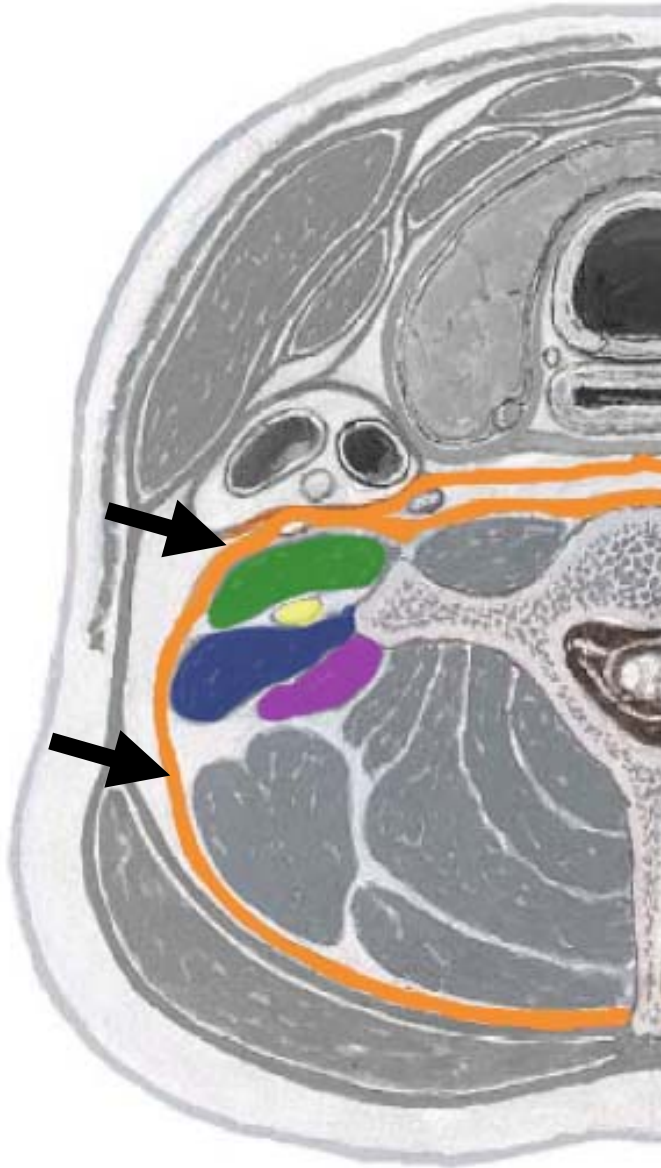
1. Posterior Triangle - Roof

Deep Investing fascia



1. Posterior Triangle - Floor

Prevertebral fascia



1. Posterior Triangle - Floor

Interscalene triangle

Anterior scalene m.

Brachial plexus &
Axillary artery

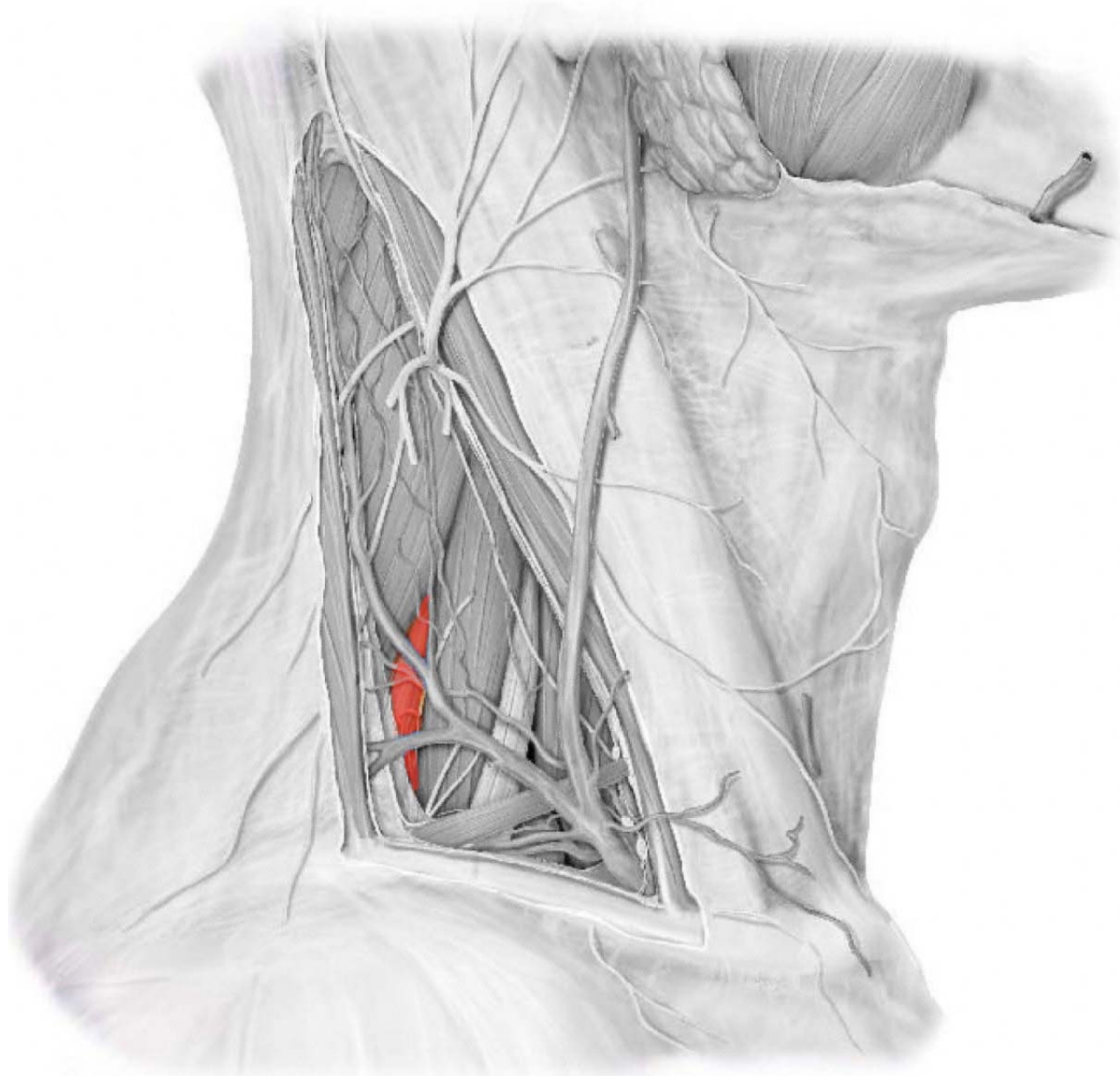
Middle scalene m.

Axillary sheath



1. Posterior Triangle - Floor

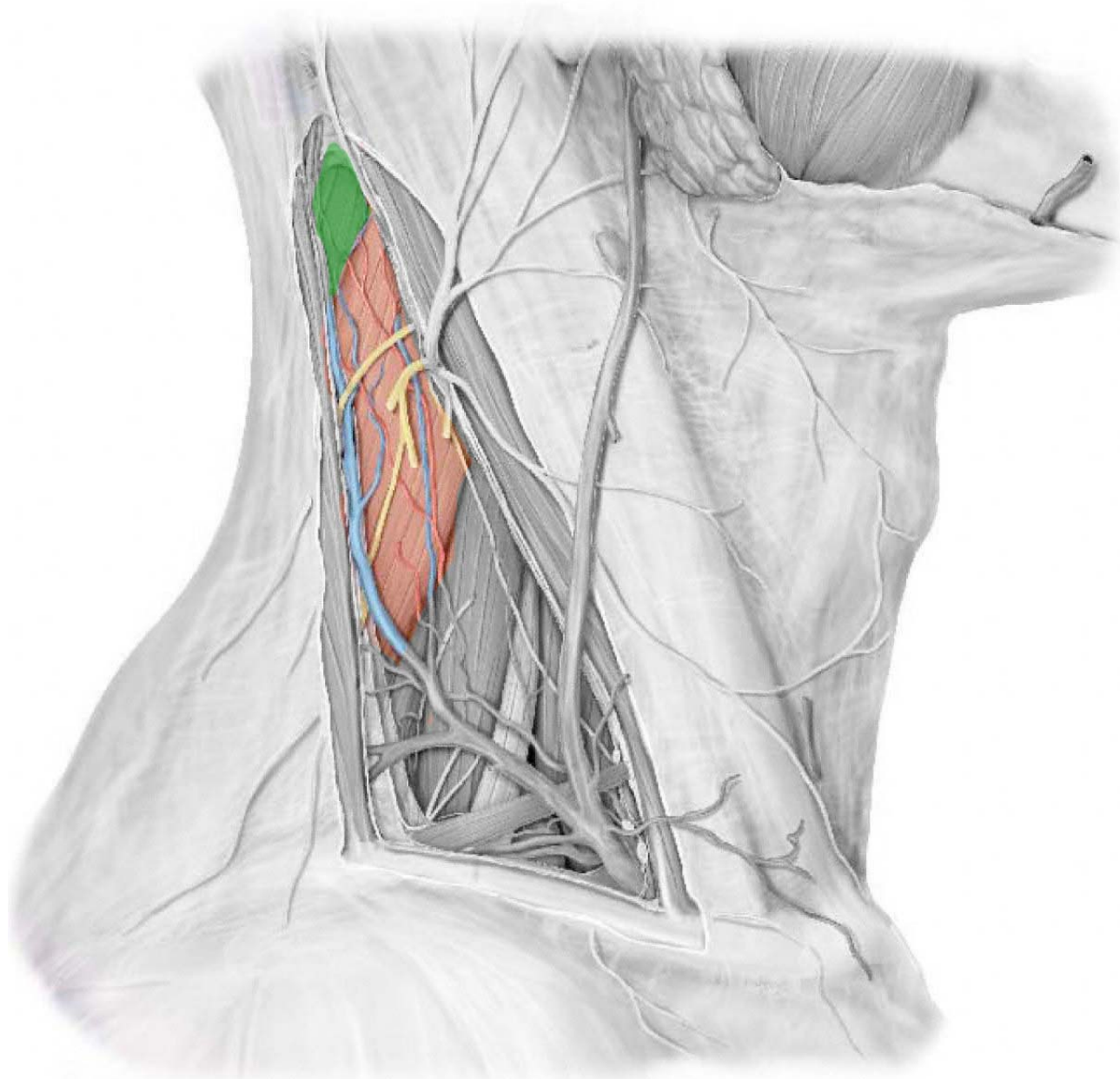
Posterior scalene m.



1. Posterior Triangle - Floor

Splen capitis m.

Lev. scap. m.

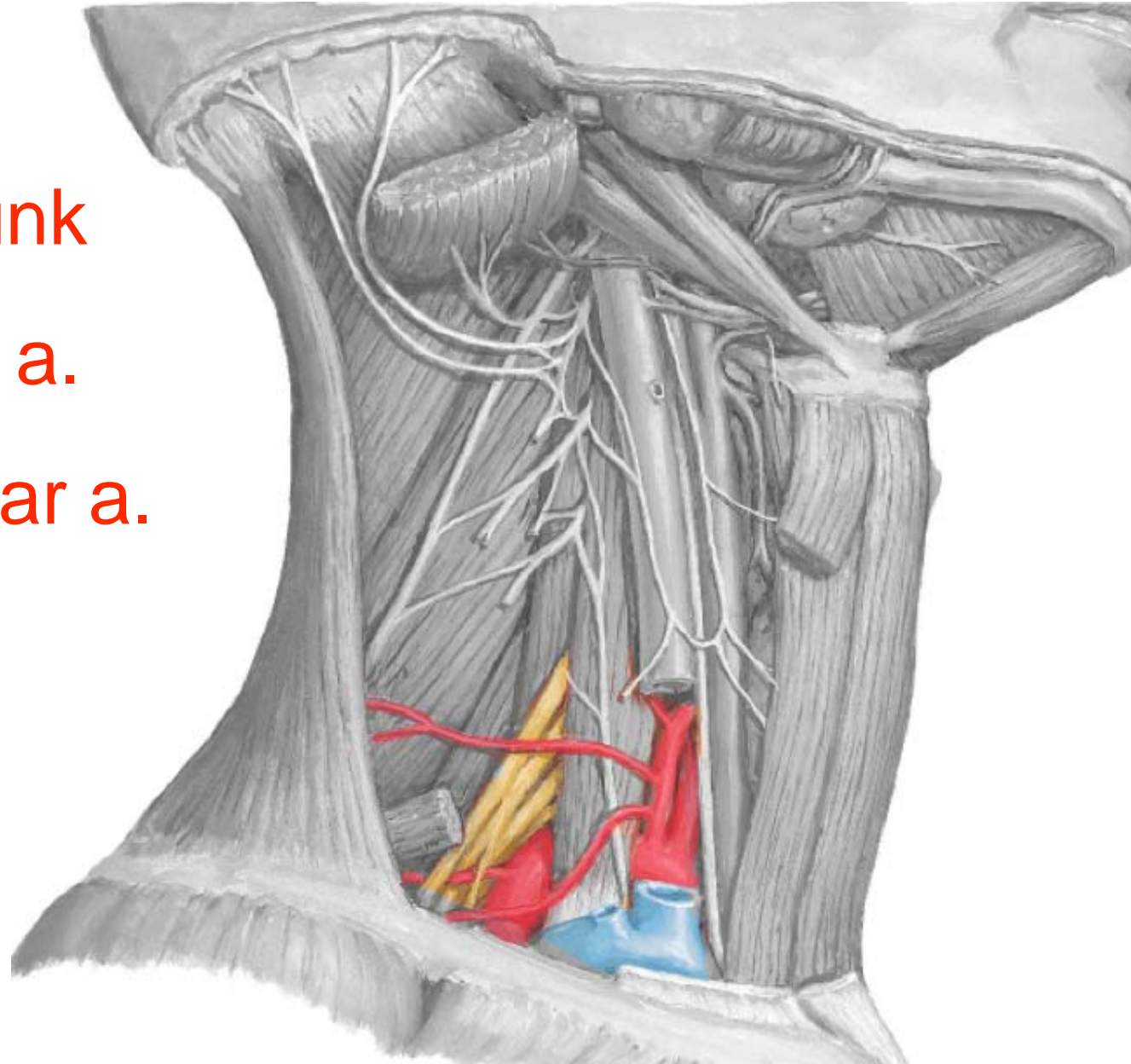


1. Posterior Triangle - Arteries

Thyrocervical trunk

- Transv. cerv. a.

- Suprascapular a.

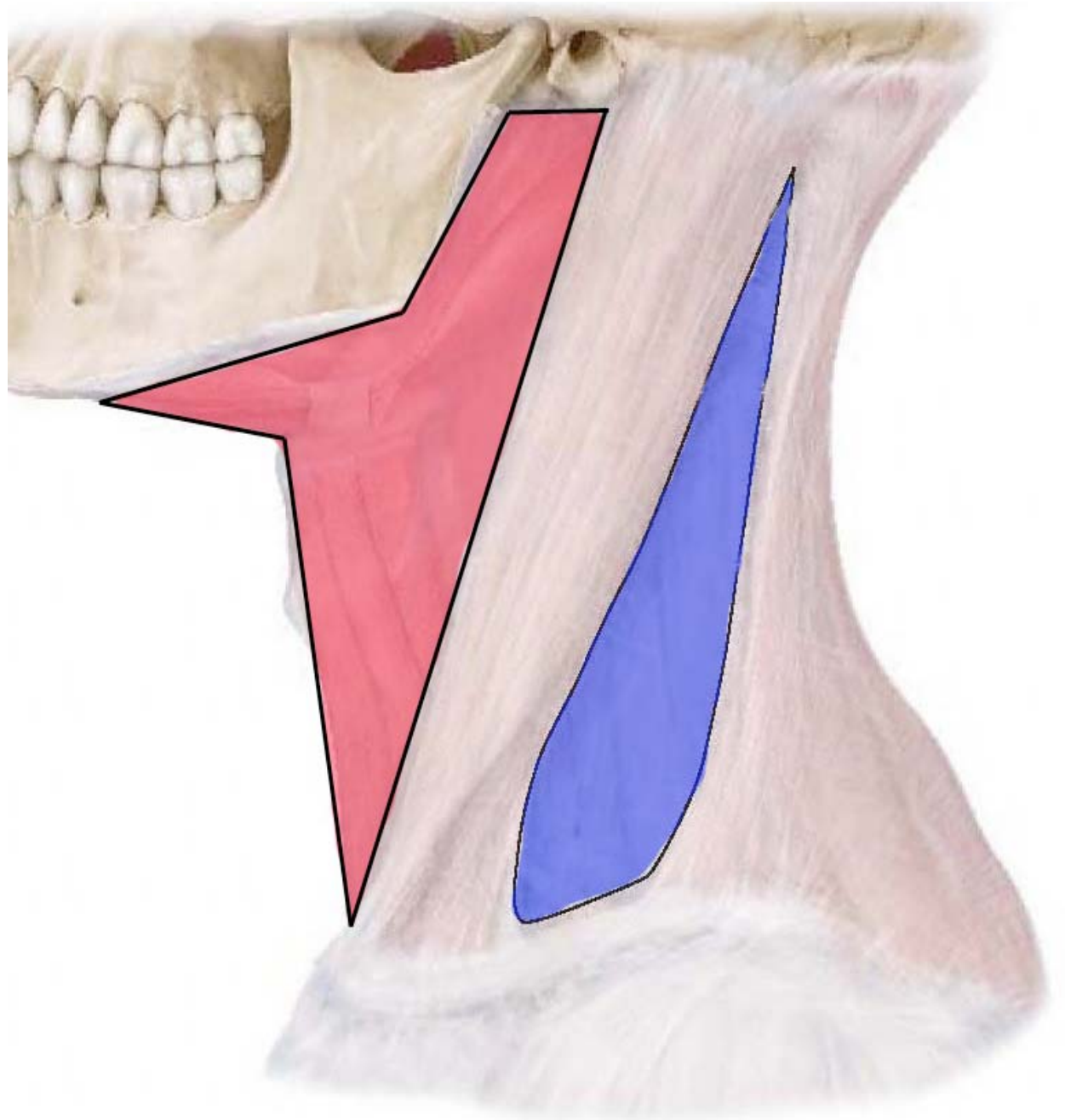


2. Triangles of the Neck

Anterior triangle

- Muscular
- Submental
- Submandibular
- Carotid

Posterior triangle



2. Anterior Triangle Subdivisions

Submental triangle



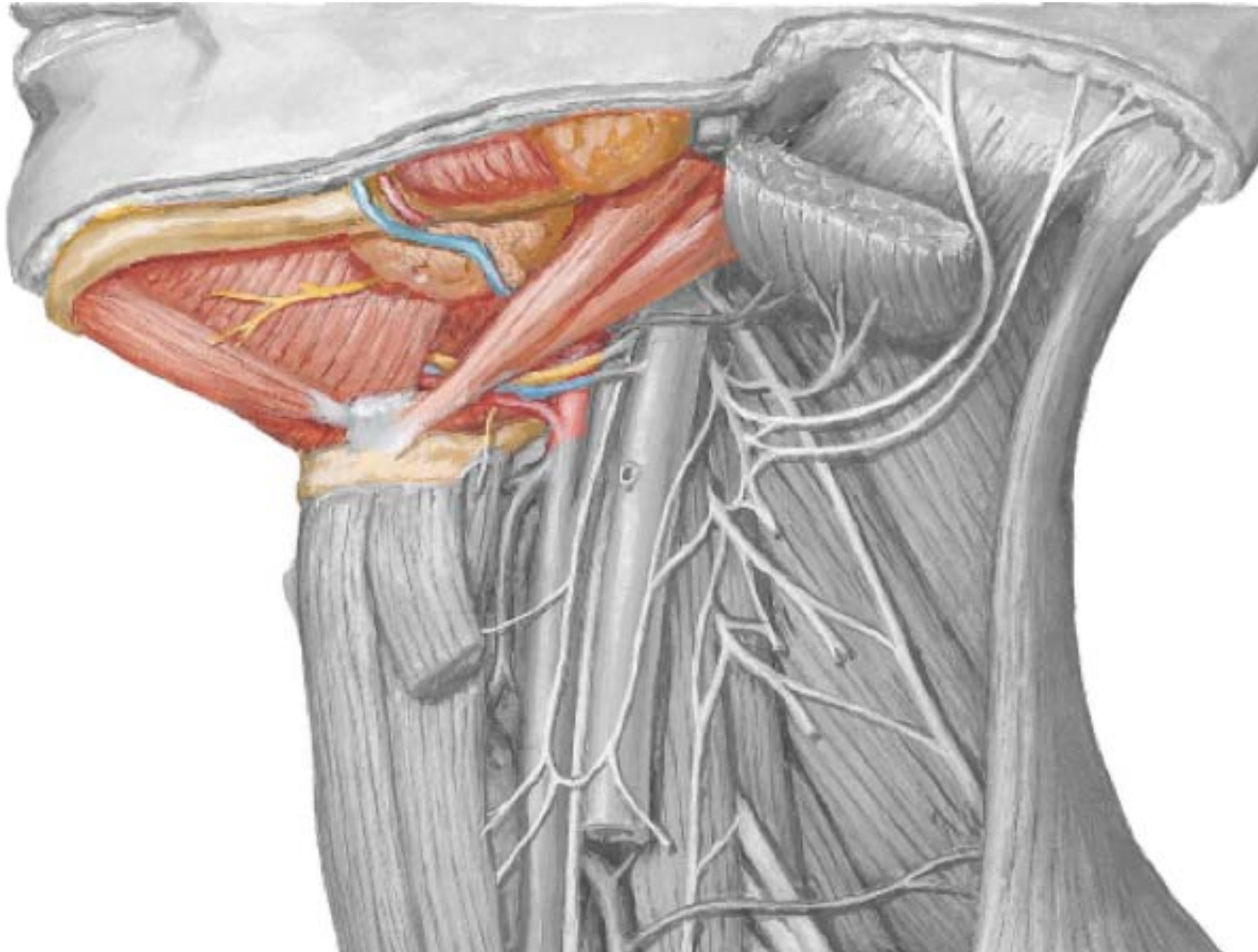
2. Anterior Triangle Subdivisions

Submandibular triangle



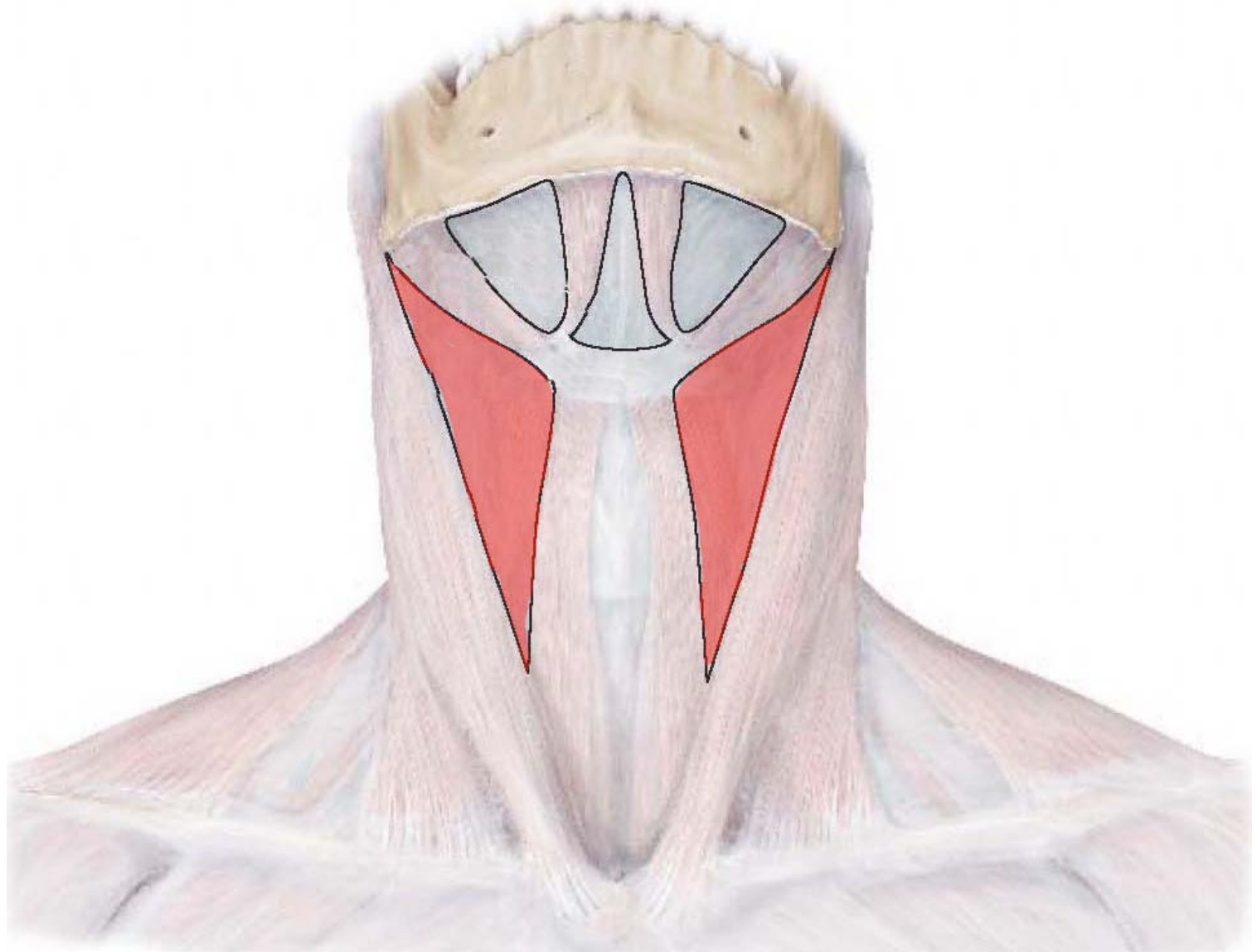
2. Anterior Triangle Subdivisions

Submandibular triangle



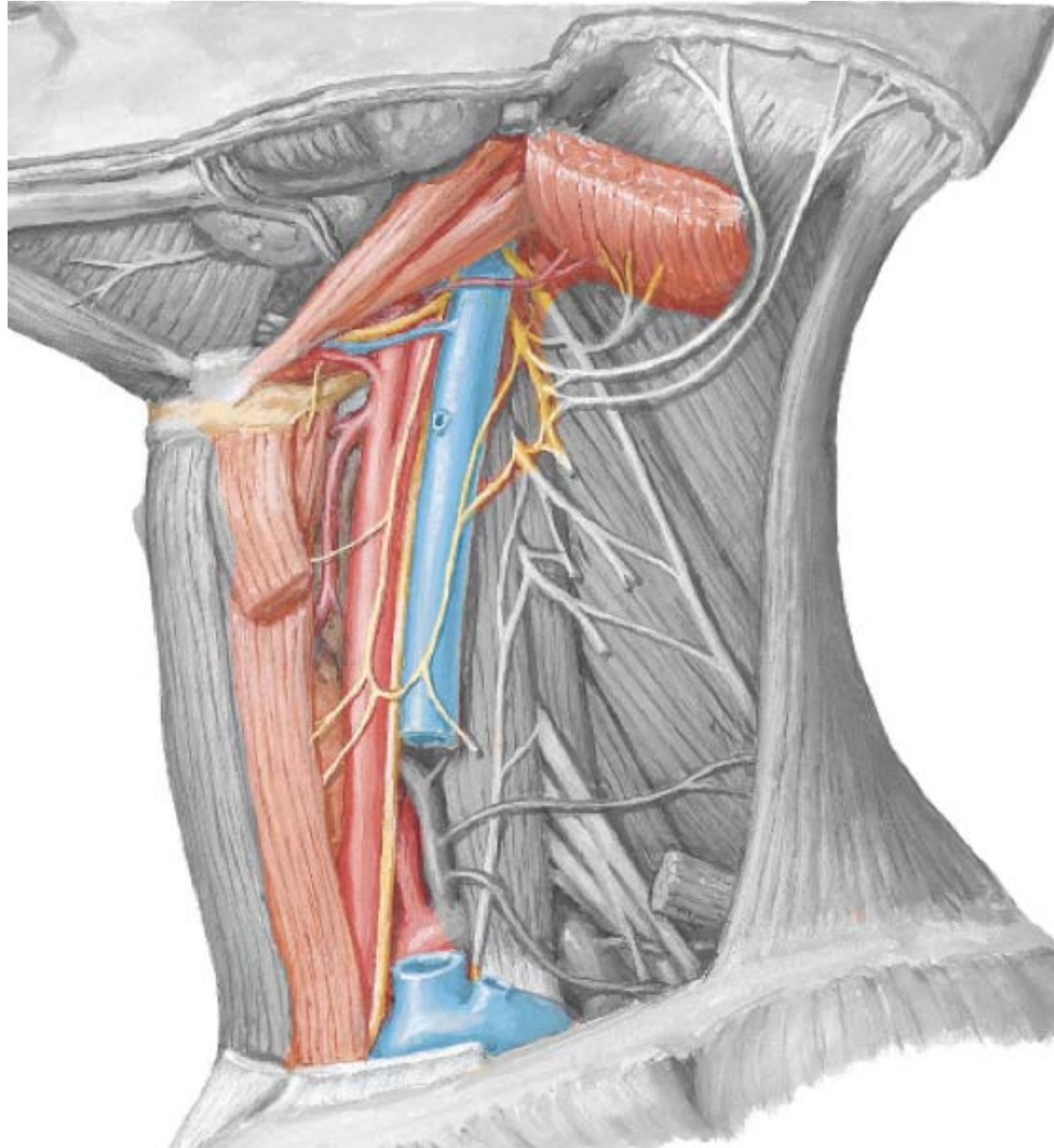
2. Anterior Triangle Subdivisions

Carotid triangle



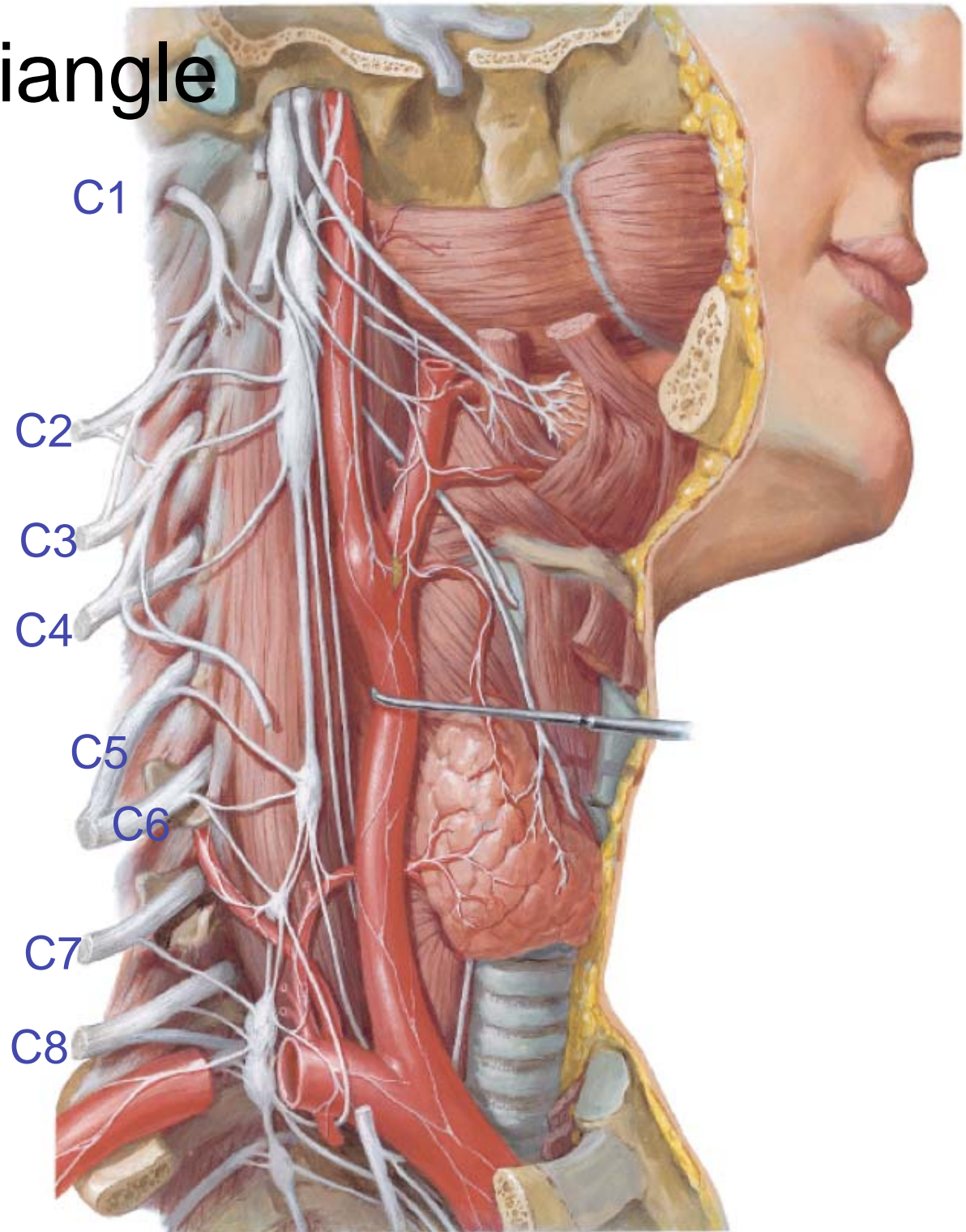
2. Anterior Triangle Subdivisions

Carotid triangle



2. Nerves - Ant Triangle

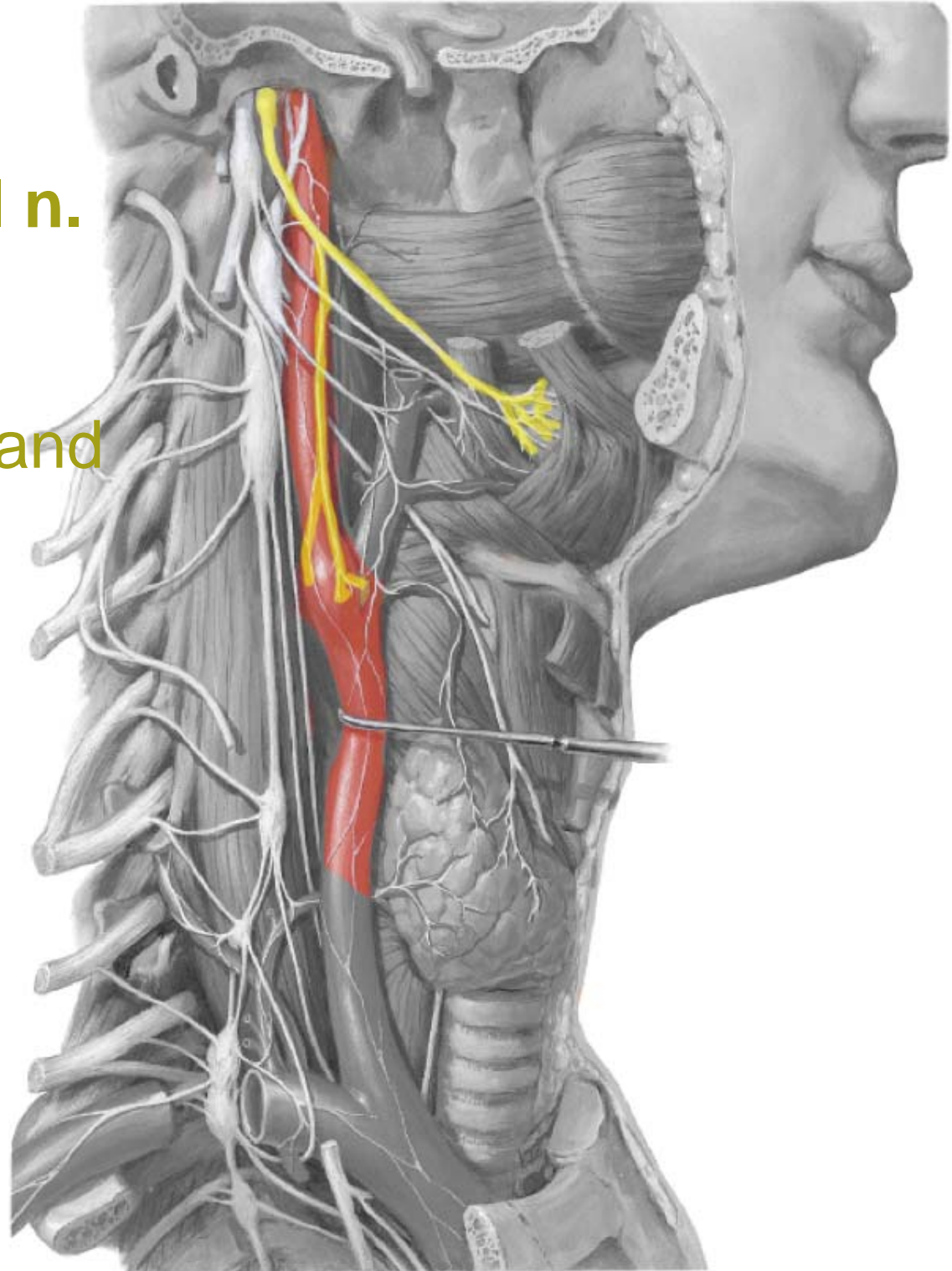
a. Cervical plexus C1



2. Nerves

b. Glossopharyngeal n. (CN IX)

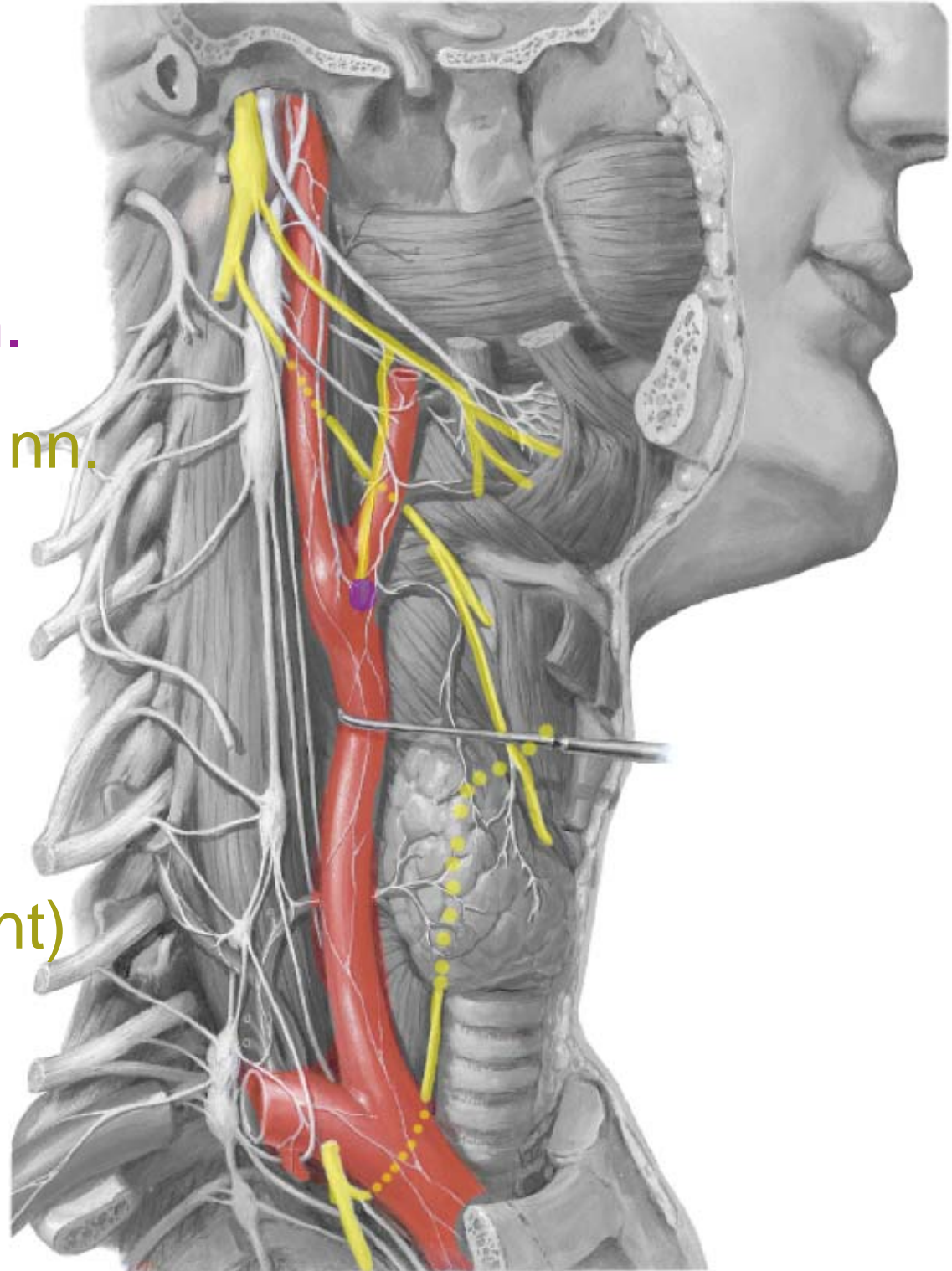
- VS: carotid sinus and body



2. Nerves

c. Vagus n. (CN X)

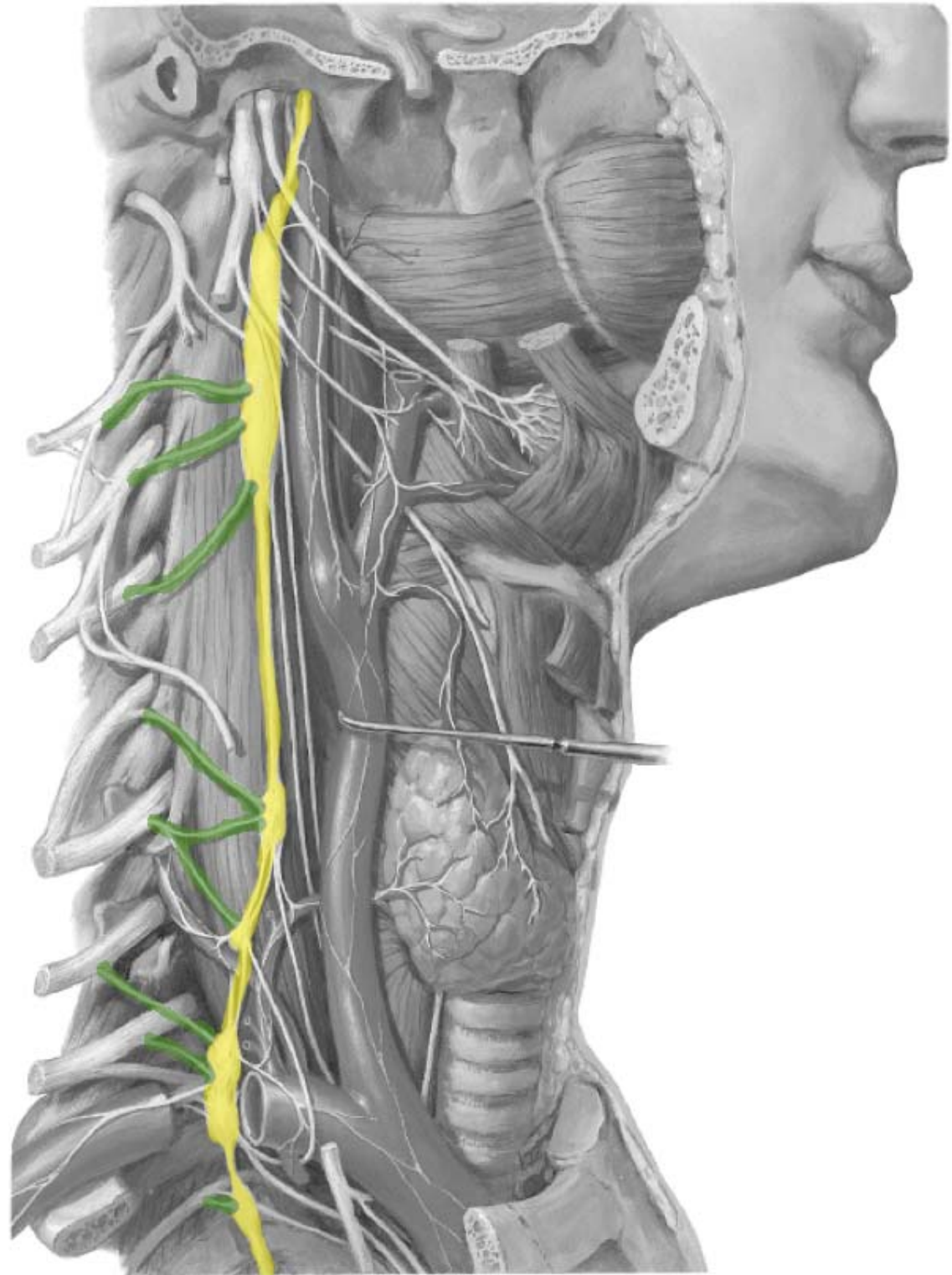
- VS: Carotid body n.
- GS/BM: Laryngeal nn.
 - Superior
 - Internal
 - External
 - Inferior (recurrent)



Nerves

d. Sympathetic trunk

Gray rami commu



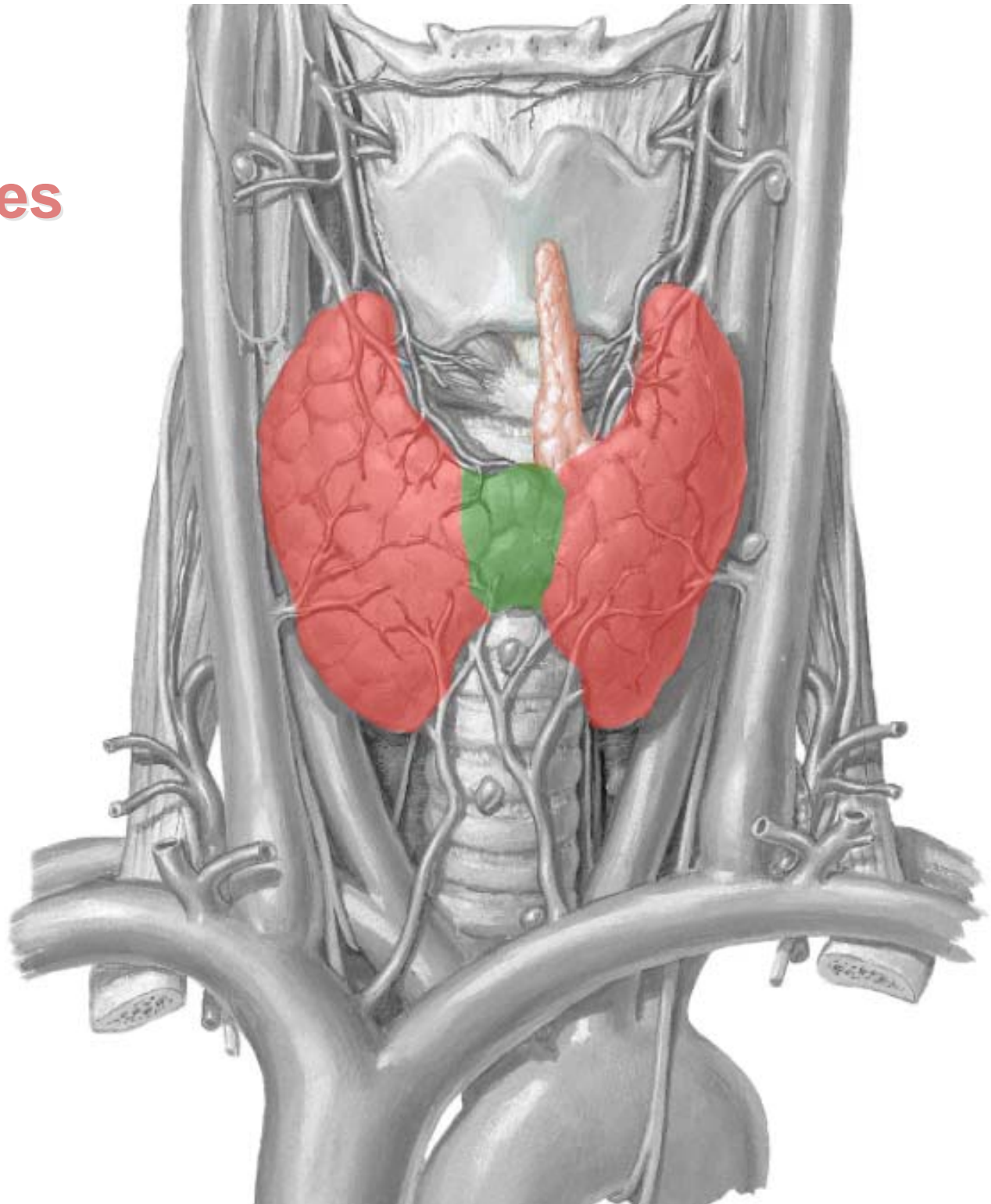
3) Visceral Triangle

- Thyroid/Parathyroid
- Trachea
- Esophagus

Thyroid

Left and Right lobes

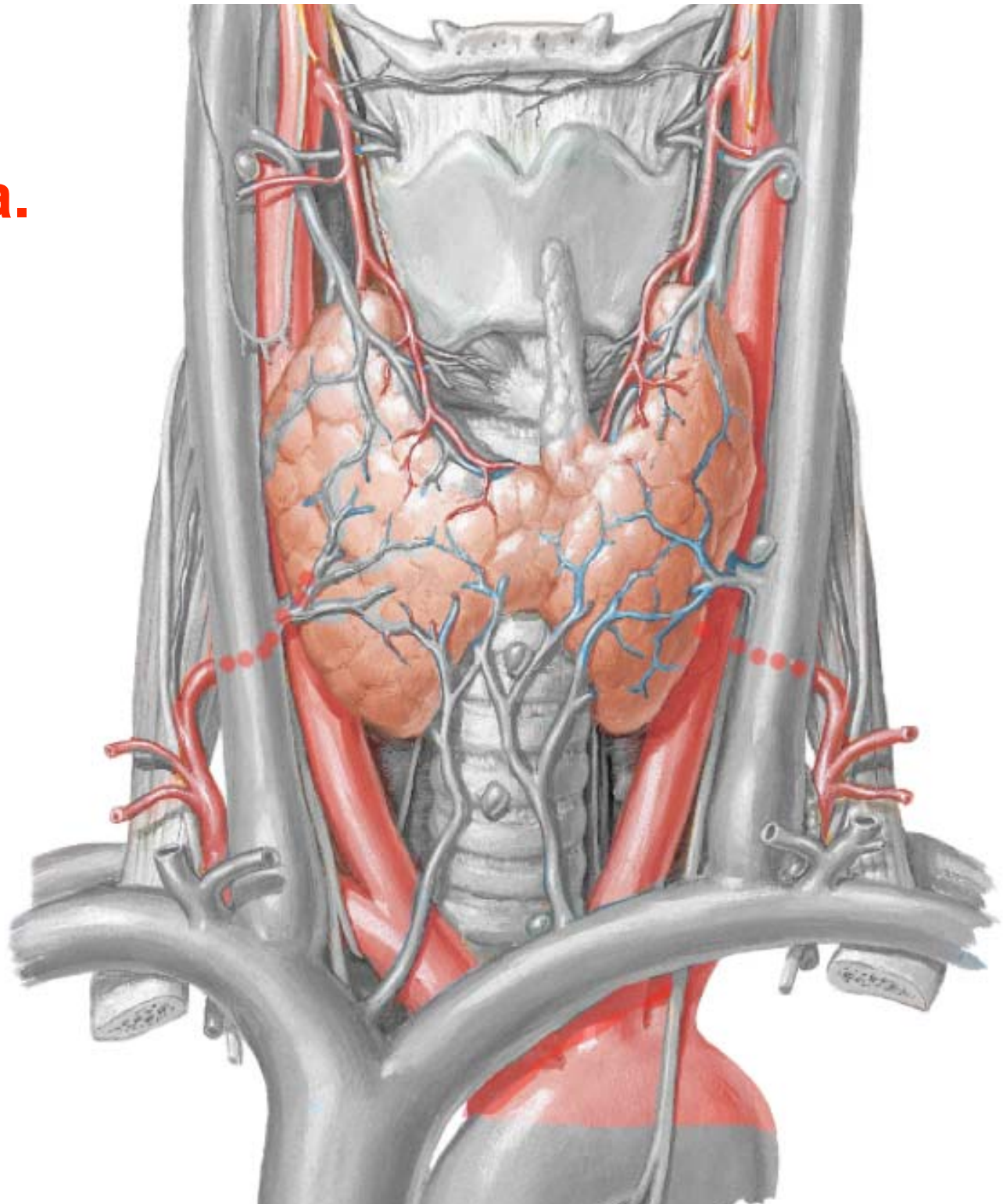
Isthmus



Thyroid

Superior thyroid a.

Inferior thyroid a.

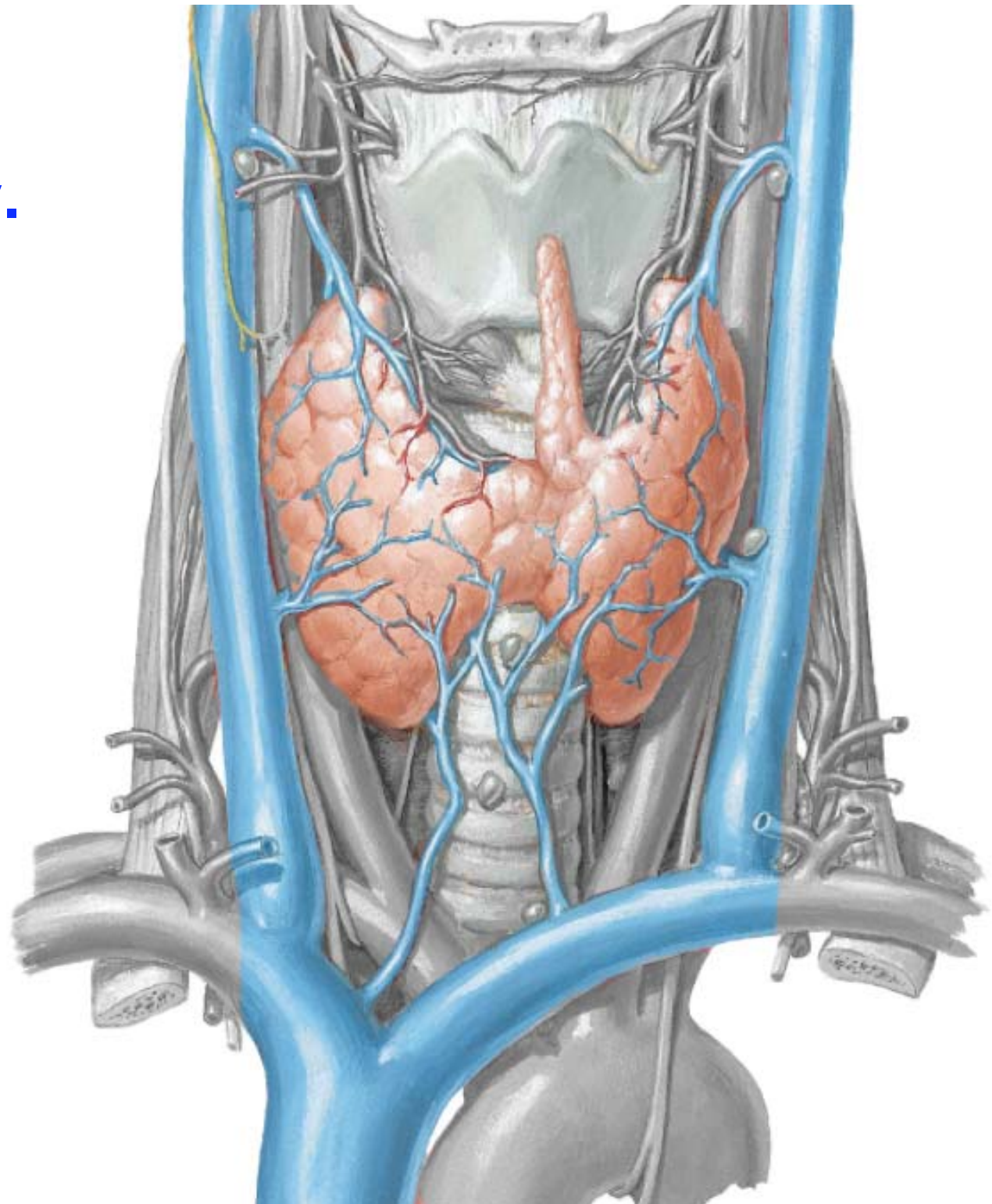


Thyroid

Superior thyroid v.

Middle thyroid v.

Inferior thyroid v.



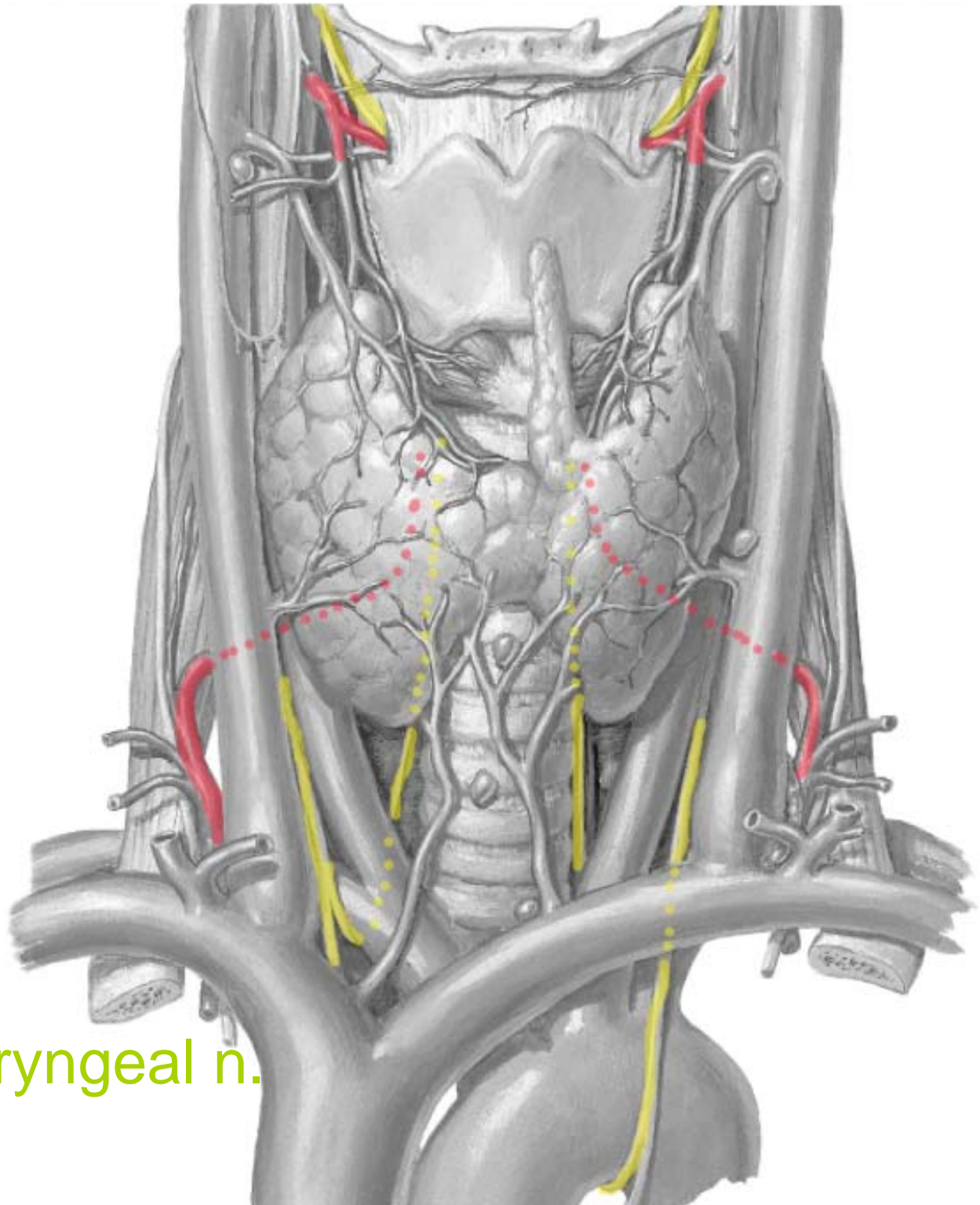
Thyroid

Internal laryngeal n .

Superior laryngeal a.

Inferior thyroid a.

Inferior (recurrent) laryngeal n.



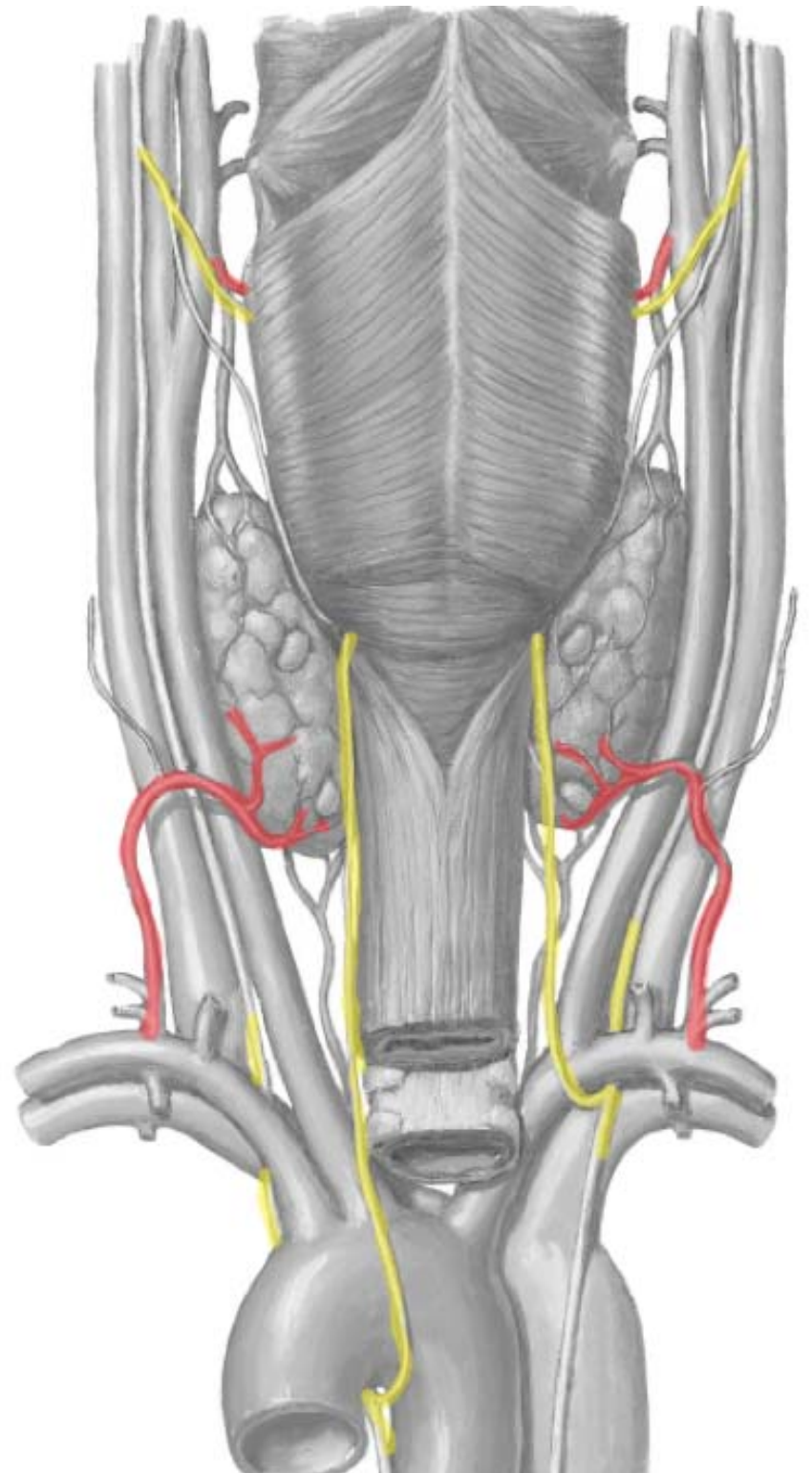
Thyroid

Internal laryngeal n .

Superior laryngeal a.

Inferior thyroid a.

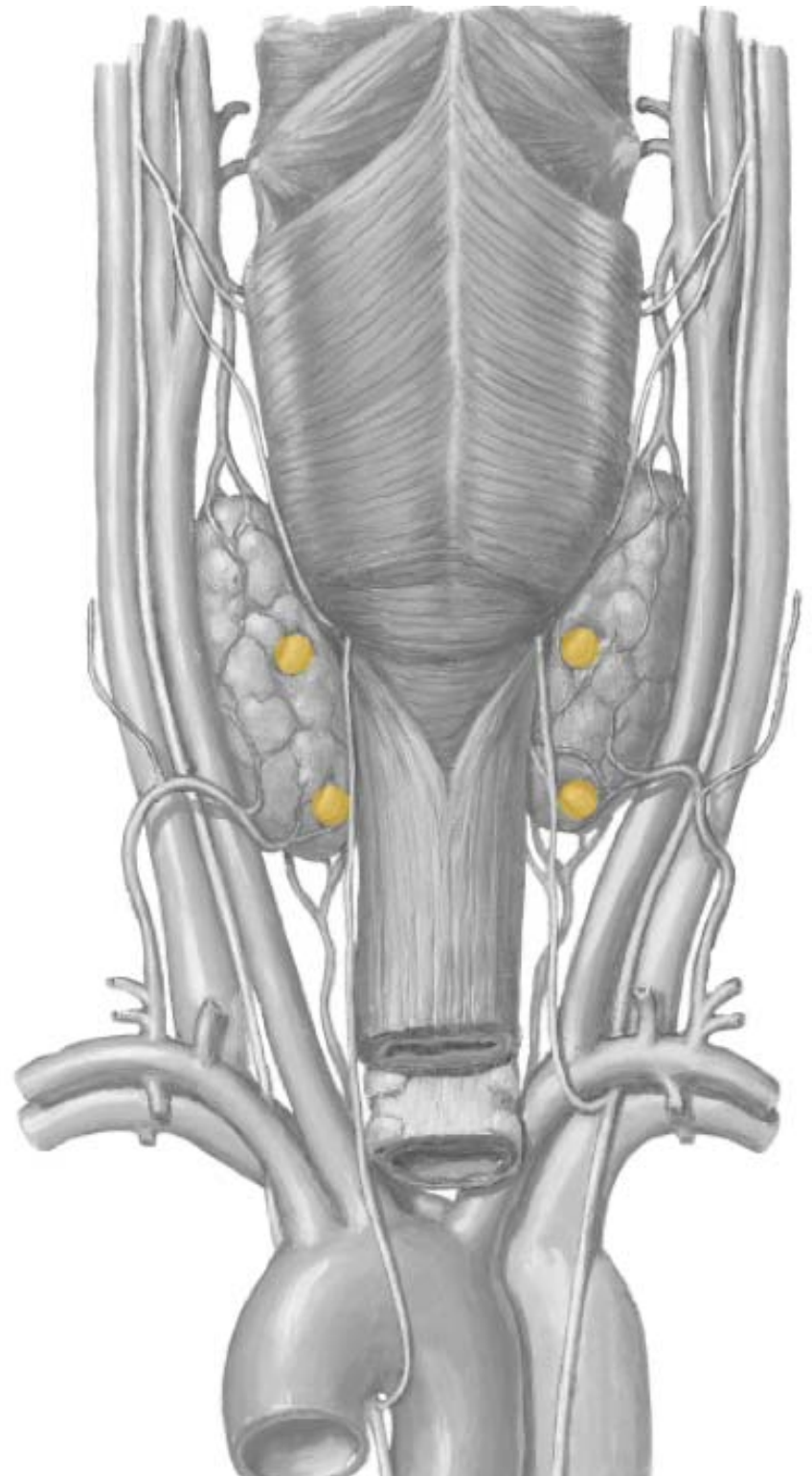
Inferior (recurrent) laryngeal n.



Parathyroid glands

Location

General function

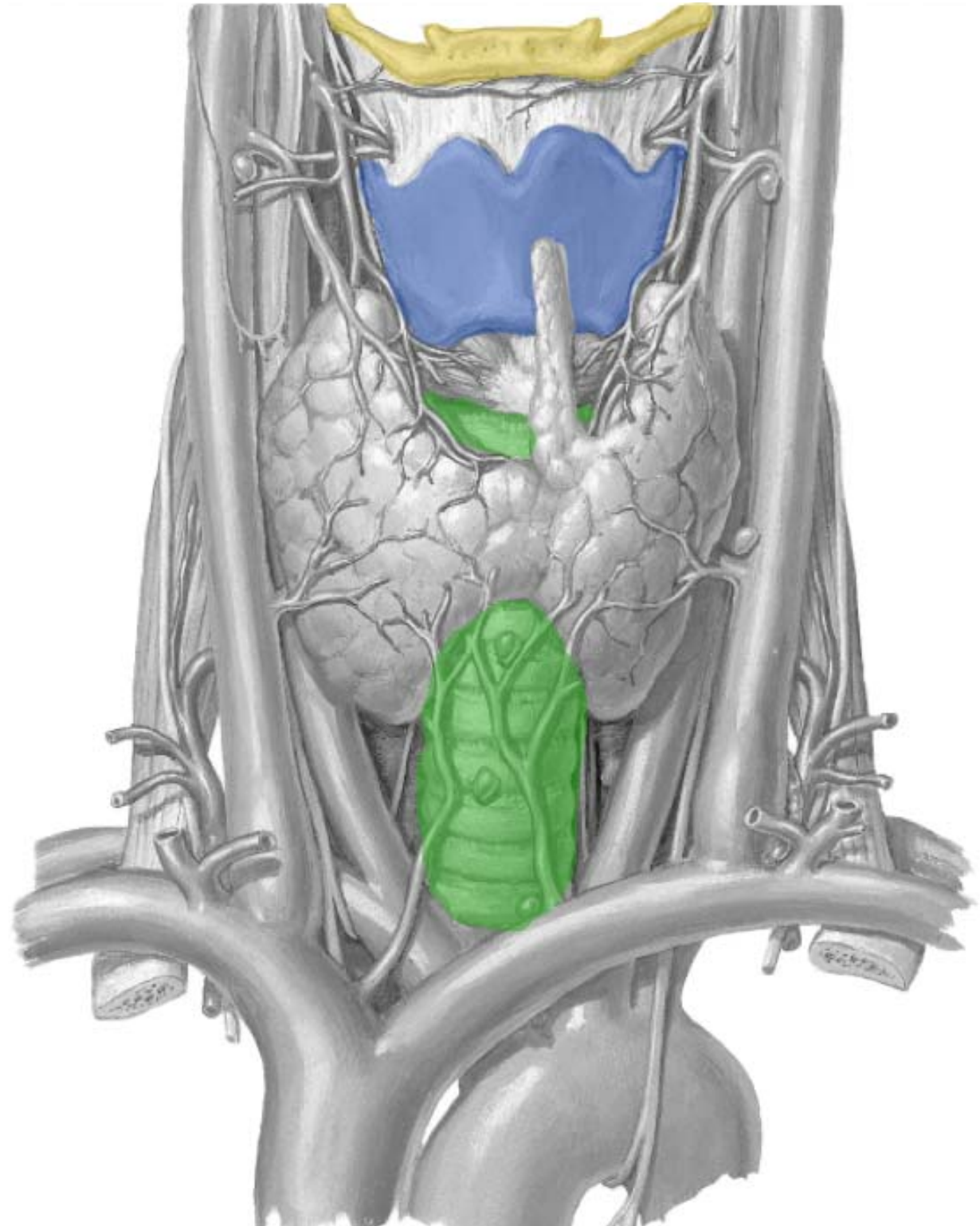


Trachea

Hyoid

Thyroid cartilage

Trachea

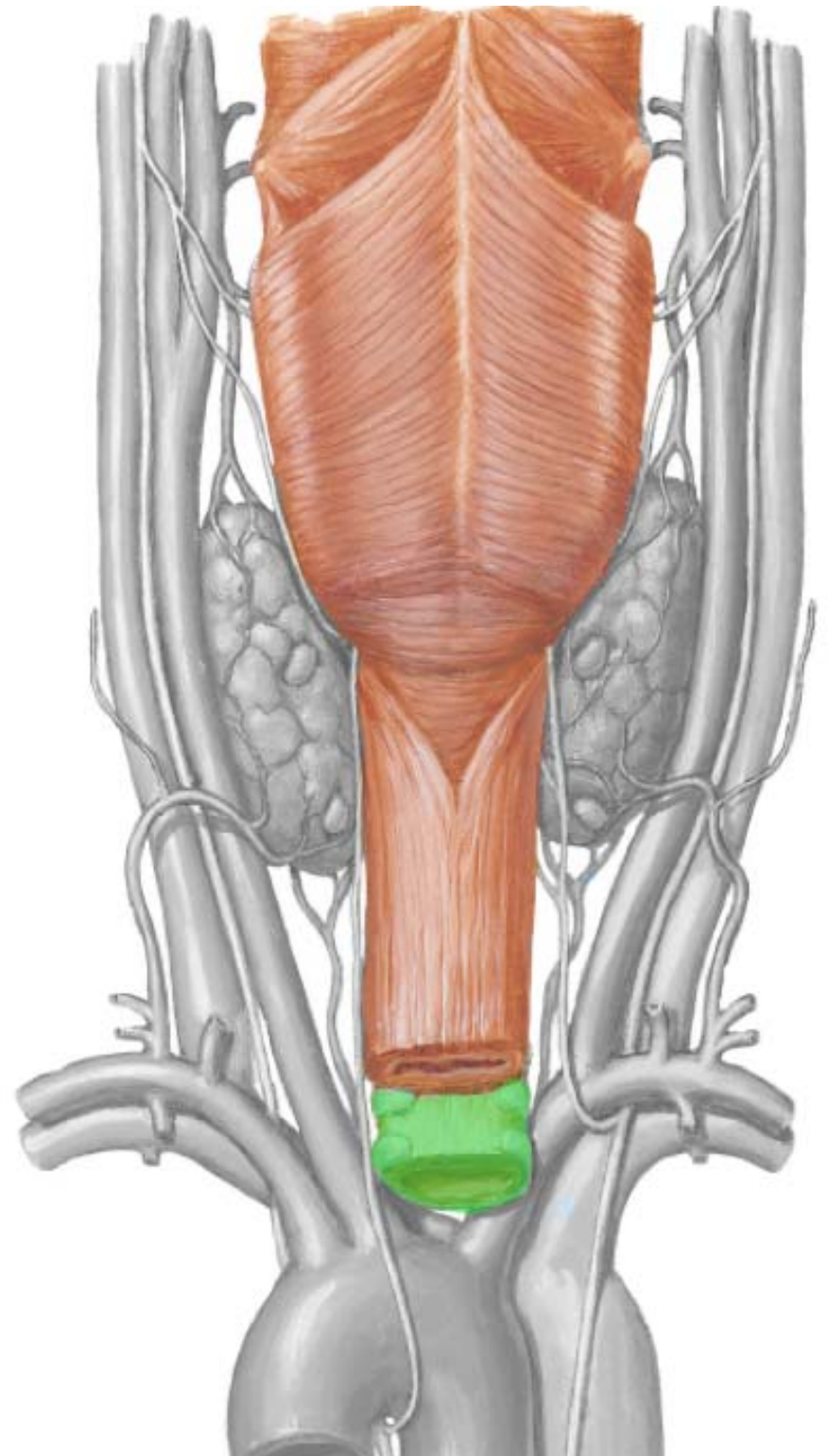


Pharynx/Esophagus

Pharynx

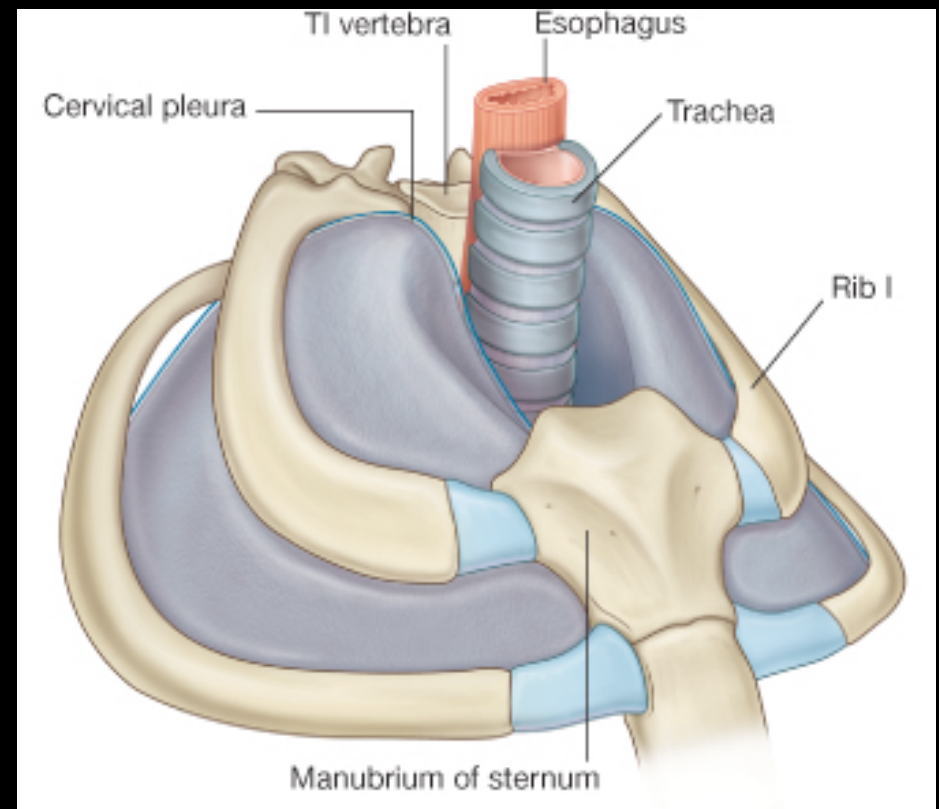
Esophagus

Trachea



4) Root of the Neck

- Aortic arch
- Subclavian artery branches
- Veins
- Thoracic duct

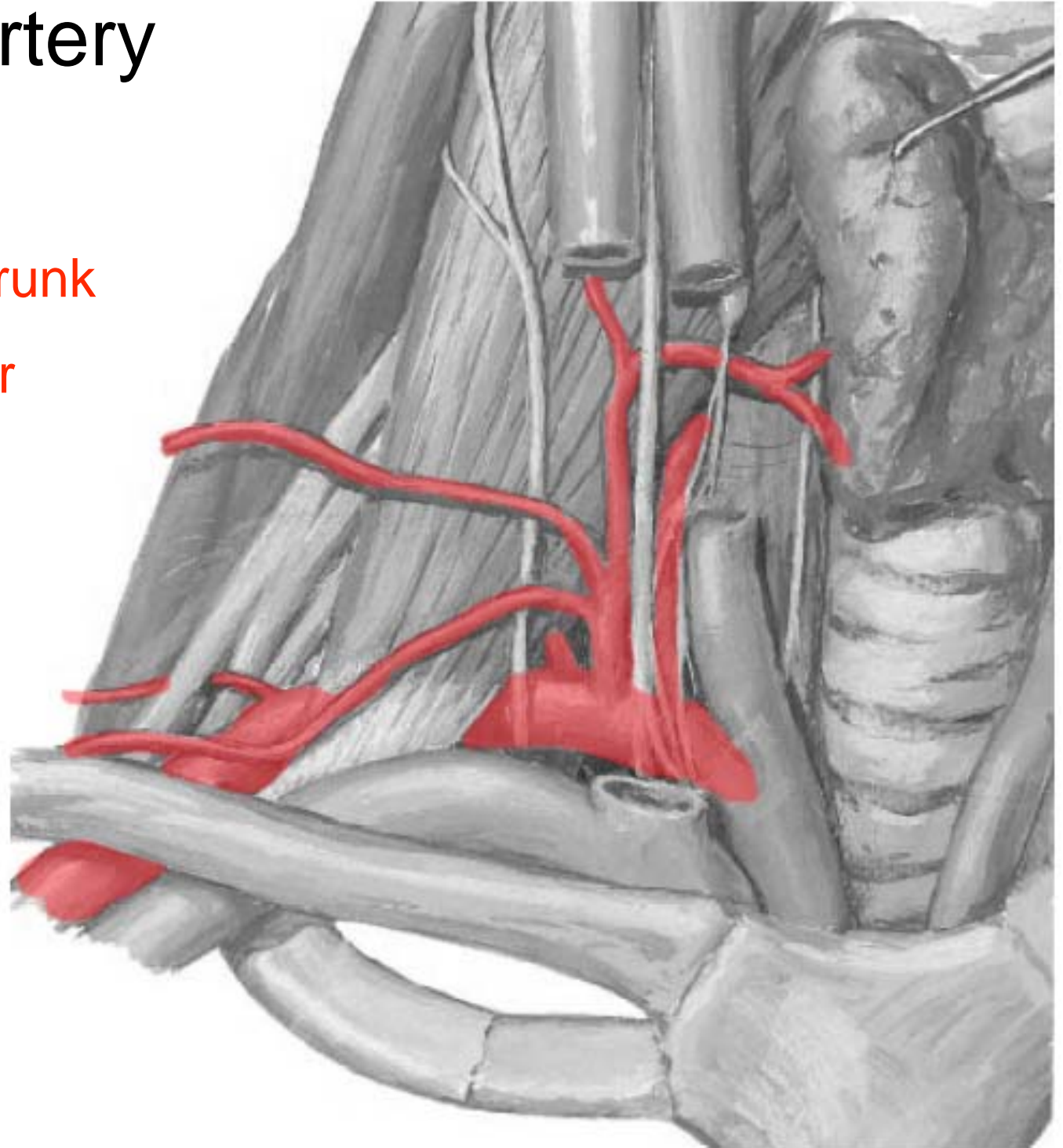


Subclavian artery

Vertebral

Thyrocervical trunk

Dorsal scapular

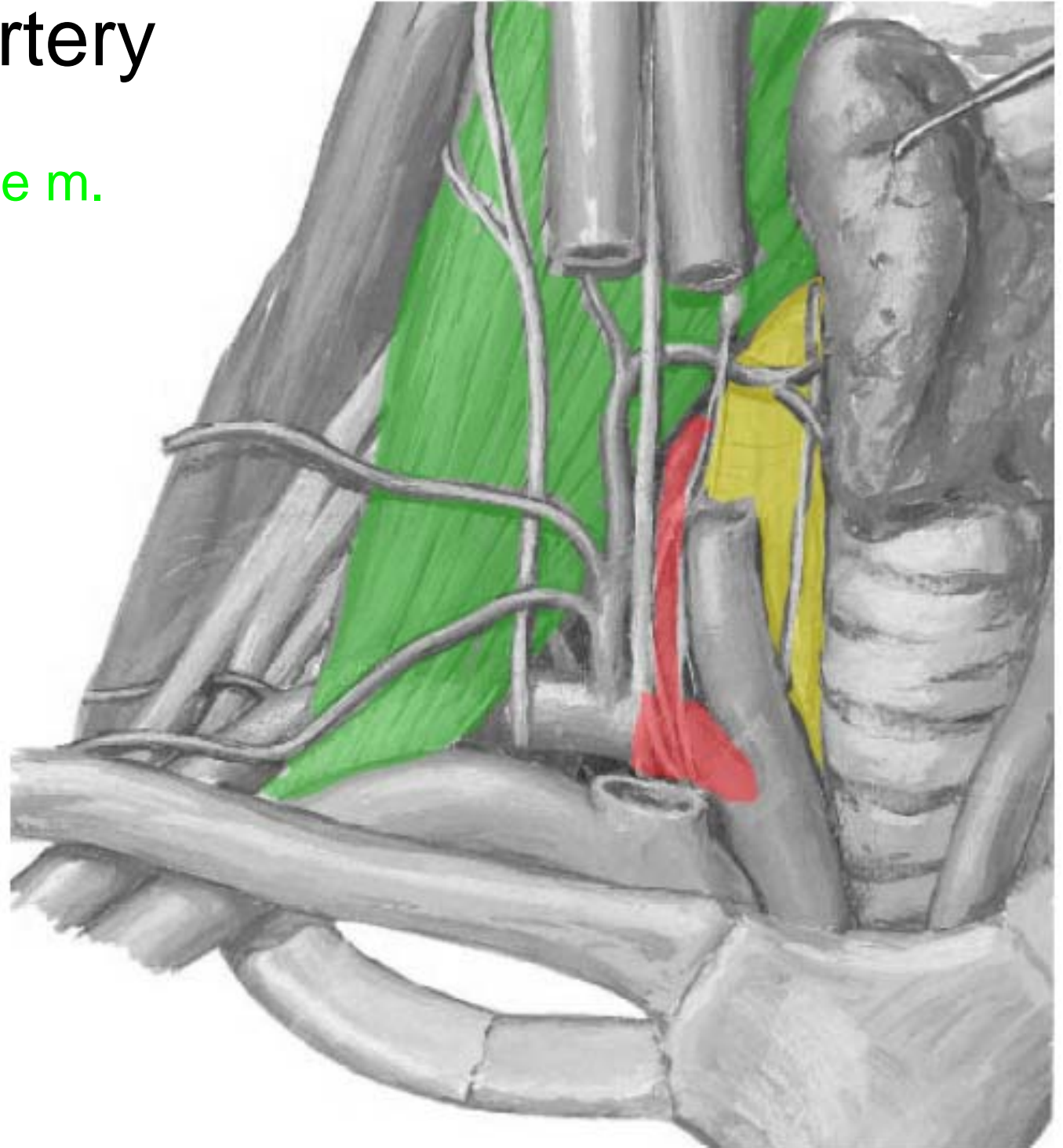


Subclavian artery

Anterior scalene m.

Vertebral

Longus coli m.

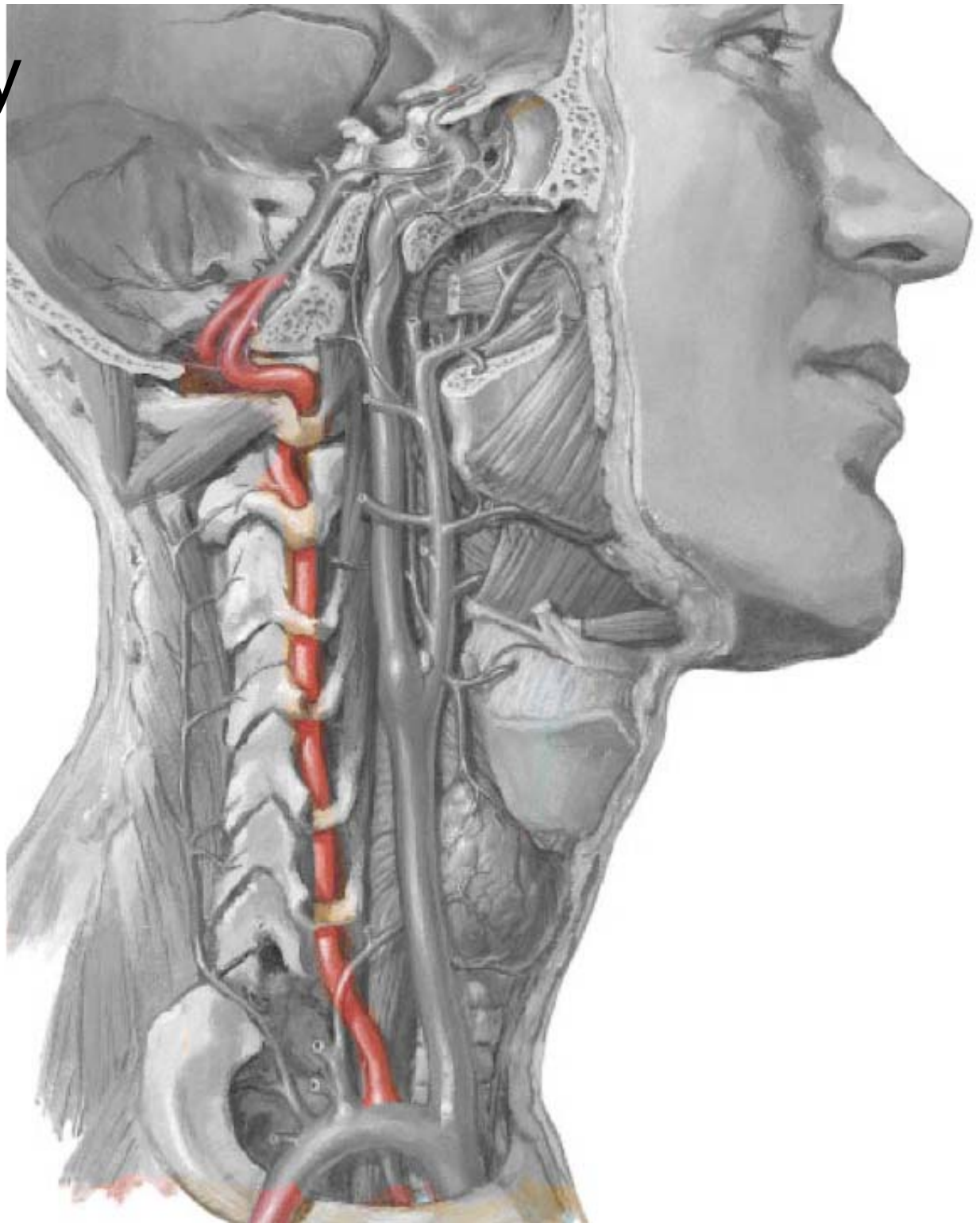


Subclavian artery

Vertebral

Transverse foramina

Foramen magnum



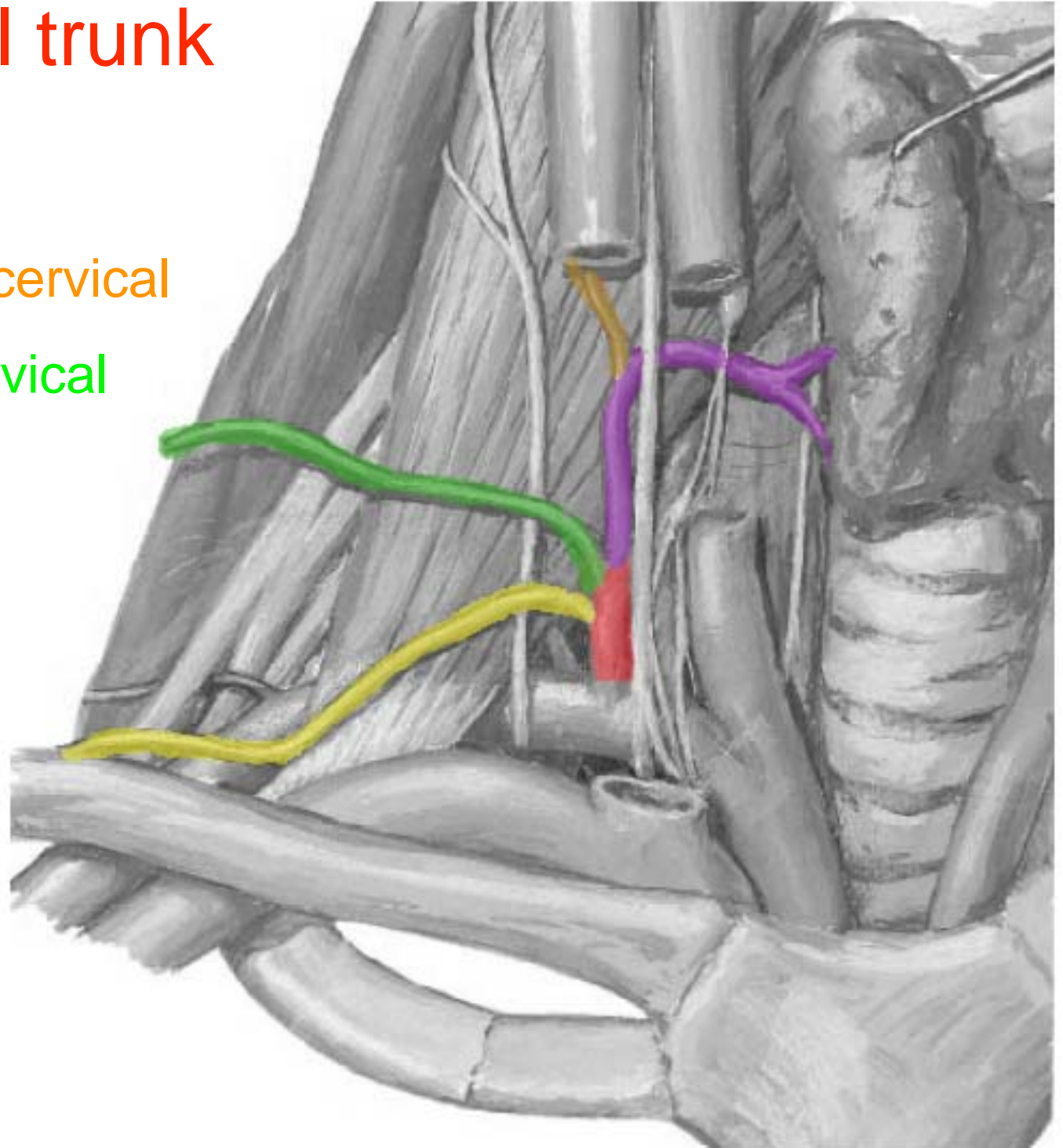
Thyrocerivical trunk

Inferior thyroid

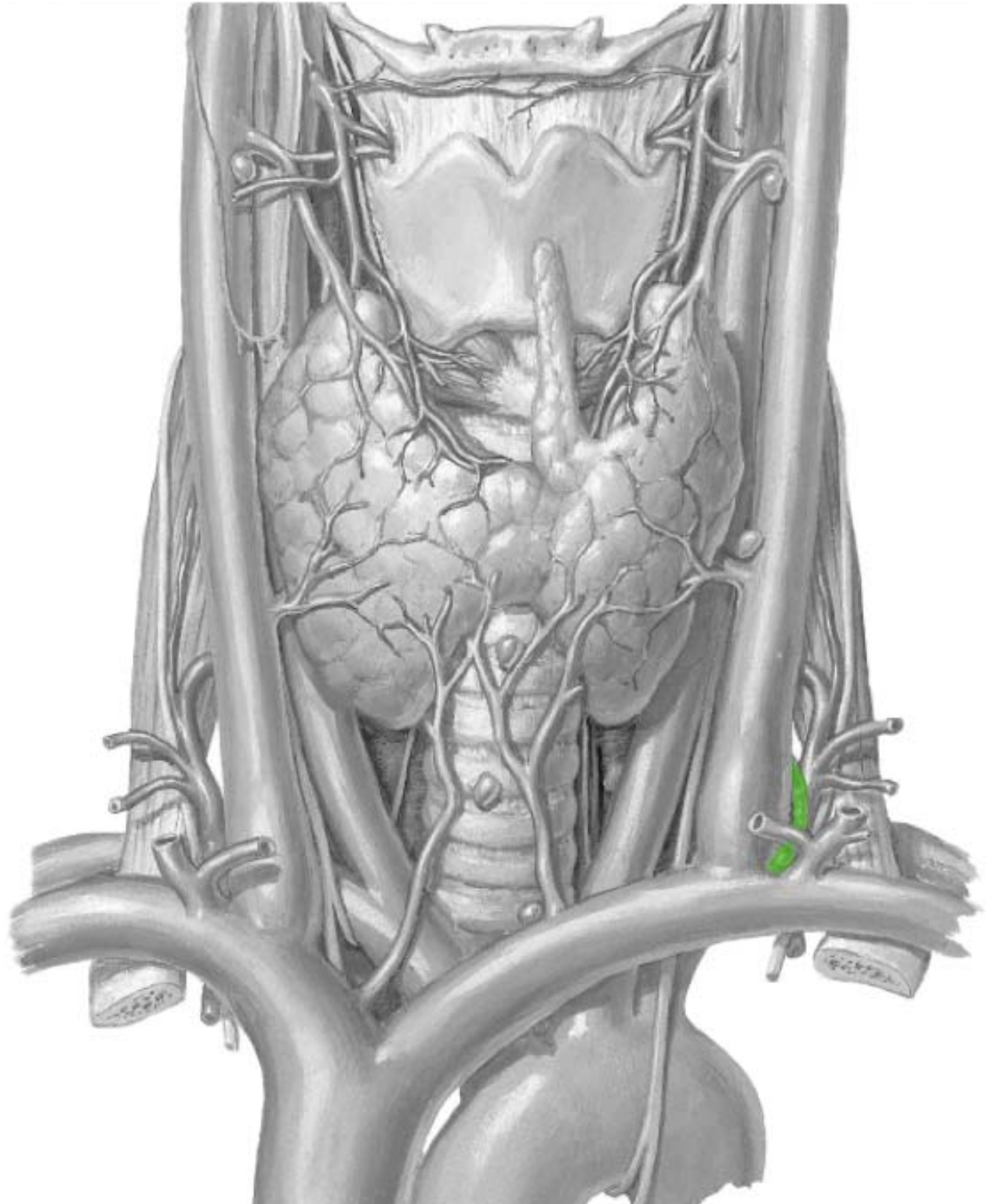
Ascending cervical

Transverse cervical

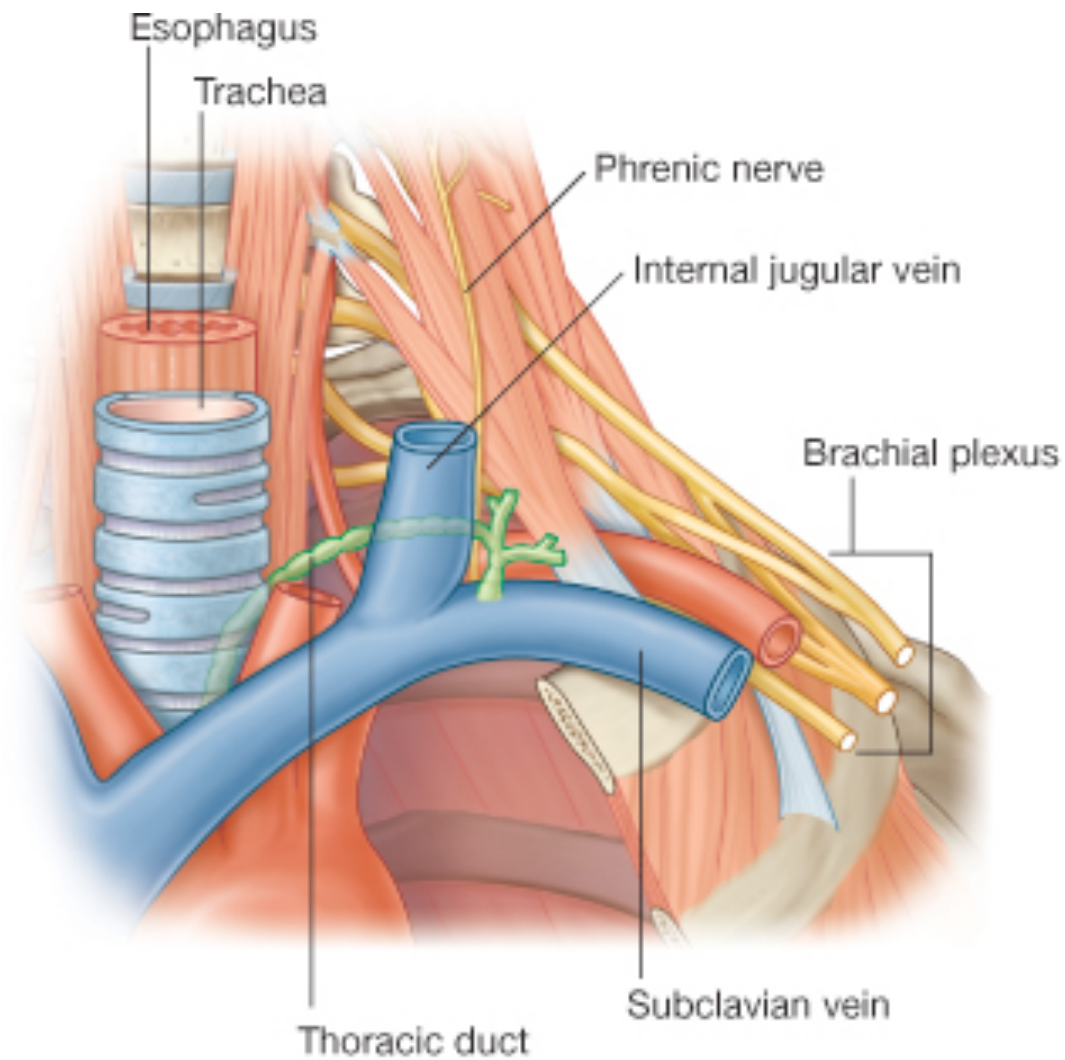
Suprascapular



Thoracic duct



Thoracic duct



THANK-YOU